



ELECTRONIC COPY

LG729547990
Report verification at igi.org



August 24, 2025
IGI Report Number **LG729547990**
Description **LABORATORY GROWN DIAMOND**
Shape and Cutting Style **CUT CORNERED
RECTANGULAR MIXED CUT**
Measurements **7.17 X 4.62 X 3.08 MM**
GRADING RESULTS
Carat Weight **1.03 CARAT**
Color Grade **FANCY YELLOW**
Clarity Grade **VS 1**

LABORATORY GROWN DIAMOND REPORT

August 24, 2025
IGI Report Number **LG729547990**
Description **LABORATORY GROWN DIAMOND**
Shape and Cutting Style **CUT CORNERED RECTANGULAR
MIXED CUT**
Measurements **7.17 X 4.62 X 3.08 MM**

GRADING RESULTS

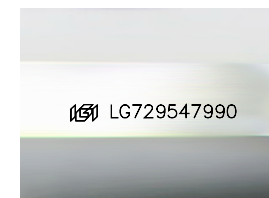
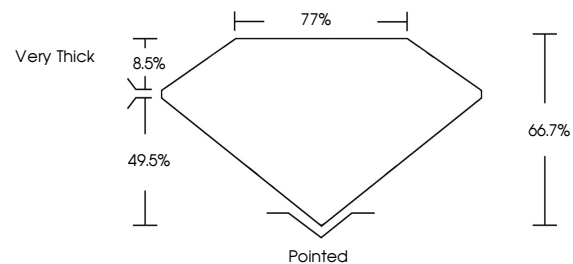
Carat Weight **1.03 CARAT**
Color Grade **FANCY YELLOW**
Clarity Grade **VS 1**

ADDITIONAL GRADING INFORMATION

Polish **EXCELLENT**
Symmetry **VERY GOOD**
Fluorescence **NONE**
Inscription(s) **IGI LG729547990**

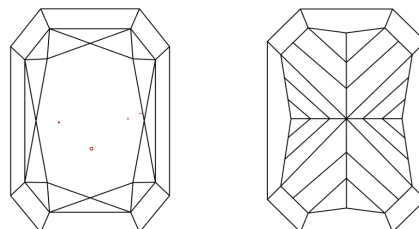
Comments: This Laboratory Grown Diamond was created by Chemical Vapor Deposition (CVD) growth process.

PROPORTIONS



Sample Image Used

CLARITY CHARACTERISTICS



KEY TO SYMBOLS

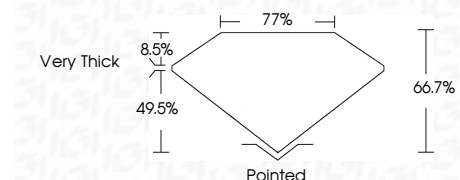
Red symbols indicate internal characteristics.
Green symbols indicate external characteristics.

COLOR

D E F G H I J Faint Very Light Light

CLARITY

IF	VS ¹⁻²	VS ¹⁻²	SI ¹⁻²	I ¹⁻³
Internally Flawless	Very Very Slightly Included	Very Slightly Included	Slightly Included	Included



ADDITIONAL GRADING INFORMATION

Polish **EXCELLENT**
Symmetry **VERY GOOD**
Fluorescence **NONE**
Inscription(s) **IGI LG729547990**
Comments: This Laboratory Grown Diamond was created by Chemical Vapor Deposition (CVD) growth process.



August 24, 2025
IGI Report No LG729547990
CUT CORNERED RECT. MIXED CUT
1.03 CARAT
FANCY YELLOW
VS 1
7.17 X 4.62 X 3.08 MM
66.7%
77%
Very Thick
Pointed
EXCELLENT
VERY GOOD
NONE
IGI LG729547990
Comments: This Laboratory Grown Diamond was created by Chemical Vapor Deposition (CVD) growth process.