



LABORATORY GROWN DIAMOND REPORT

August 23, 2025
 IGI Report Number **LG729547914**
 Description **LABORATORY GROWN DIAMOND**
 Shape and Cutting Style **HEXAGONAL STEP CUT**
 Measurements **10.19 X 5.34 X 2.96 MM**

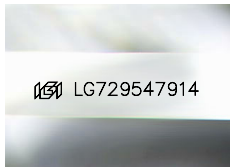
GRADING RESULTS

Carat Weight **0.99 CARAT**
 Color Grade **E**
 Clarity Grade **VS 1**

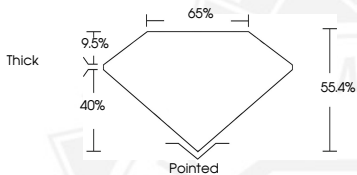
ADDITIONAL GRADING INFORMATION

Polish **EXCELLENT**
 Symmetry **EXCELLENT**
 Fluorescence **NONE**
 Inscription(s) **IGI LG729547914**

Comments: This Laboratory Grown Diamond was created by Chemical Vapor Deposition (CVD) growth process. Type IIa



Sample Image Used



August 23, 2025
 IGI Report Number **LG729547914**
 HEXAGONAL STEP CUT
 LABORATORY GROWN DIAMOND
 10.19 X 5.34 X 2.96 MM
 Carat Weight **0.99 CARAT**
 Color Grade **E**
 Clarity Grade **VS 1**
 Polish **EXCELLENT**
 Symmetry **EXCELLENT**
 Fluorescence **NONE**
 Inscription(s) **IGI LG729547914**

Comments: This Laboratory Grown Diamond was created by Chemical Vapor Deposition (CVD) growth process. Type IIa



August 23, 2025
 IGI Report Number **LG729547914**
 HEXAGONAL STEP CUT
 LABORATORY GROWN DIAMOND
 10.19 X 5.34 X 2.96 MM
 Carat Weight **0.99 CARAT**
 Color Grade **E**
 Clarity Grade **VS 1**
 Polish **EXCELLENT**
 Symmetry **EXCELLENT**
 Fluorescence **NONE**
 Inscription(s) **IGI LG729547914**

Comments: This Laboratory Grown Diamond was created by Chemical Vapor Deposition (CVD) growth process. Type IIa



THIS DOCUMENT WAS PRODUCED WITH THE FOLLOWING SECURITY MEASURES: SPECIAL DOCUMENT PAPER, INK SCREENS, WATERMARK, BACKGROUND DESIGNS, HOLOGRAM AND OTHER SECURITY FEATURES NOT LISTED AND DO EXCEED DOCUMENT SECURITY INDUSTRY GUIDELINES.