

INTERNATIONAL
GEMOLOGICAL
INSTITUTE

ELECTRONIC COPY

LABORATORY GROWN DIAMOND REPORT

August 21, 2025

IGI Report Number

LG729547728

Description

LABORATORY GROWN DIAMOND

Shape and Cutting Style

PRINCESS CUT

Measurements

7.87 X 7.86 X 5.61 MM

GRADING RESULTS

Carat Weight

3.04 CARATS

Color Grade

E

Clarity Grade

VVS 2

ADDITIONAL GRADING INFORMATION

Polish

EXCELLENT


Symmetry

EXCELLENT

Fluorescence

NONE

Inscription(s)

 LG729547728

Comments: This Laboratory Grown Diamond was created by Chemical Vapor Deposition (CVD) growth process.
Type IIa

LABORATORY GROWN DIAMOND REPORT

August 21, 2025

IGI Report No LG729547728

PRINCESS CUT

7.87 X 7.86 X 5.61 MM

3.04 CARATS

E

VVS 2

71.4%

74%


Slightly Thick To Thick

Pointed

EXCELLENT

EXCELLENT

NONE

 LG729547728

Comments: This Laboratory Grown Diamond was created by Chemical Vapor Deposition (CVD) growth process.
Type IIa

LABORATORY GROWN DIAMOND REPORT

August 21, 2025

IGI Report No LG729547728

PRINCESS CUT

7.87 X 7.86 X 5.61 MM

3.04 CARATS

E

VVS 2

71.4%

74%


Slightly Thick To Thick

Pointed

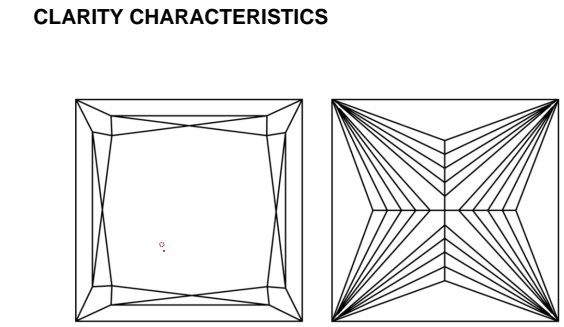
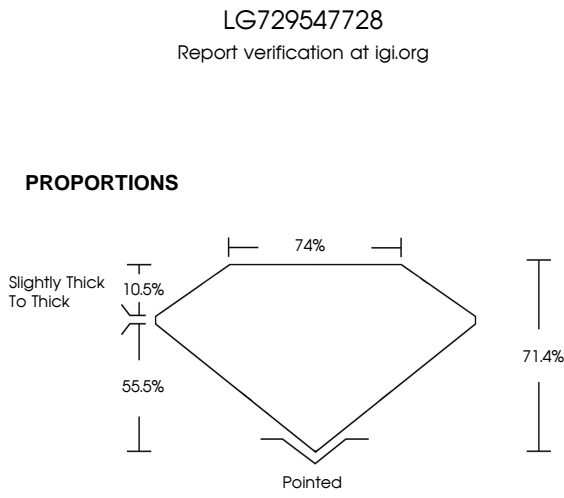
EXCELLENT

EXCELLENT

NONE

 LG729547728

Comments: This Laboratory Grown Diamond was created by Chemical Vapor Deposition (CVD) growth process.
Type IIa



KEY TO SYMBOLS

Red symbols indicate internal characteristics.
Green symbols indicate external characteristics.

COLOR				
D	E	F	G	H
I	J	Faint	Very Light	Light

CLARITY				
IF	VS ¹⁻²	VS ¹⁻²	SI ¹⁻²	I ¹⁻³
Internally Flawless	Very Very Slightly Included	Very Slightly Included	Slightly Included	Included

LABORATORY GROWN DIAMOND REPORT

August 21, 2025

IGI Report Number

LG729547728

Description

LABORATORY GROWN DIAMOND

Shape and Cutting Style

PRINCESS CUT

Measurements

7.87 X 7.86 X 5.61 MM

GRADING RESULTS

Carat Weight

3.04 CARATS

Color Grade

E

Clarity Grade

VVS 2

ADDITIONAL GRADING INFORMATION

Polish

EXCELLENT

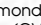
Symmetry

EXCELLENT

Fluorescence

NONE

Inscription(s)

 LG729547728

Comments: This Laboratory Grown Diamond was created by Chemical Vapor Deposition (CVD) growth process.
Type IIa

LABORATORY GROWN DIAMOND REPORT

August 21, 2025

IGI Report No LG729547728

PRINCESS CUT

7.87 X 7.86 X 5.61 MM

3.04 CARATS

E

VVS 2

71.4%

74%


Slightly Thick To Thick

Pointed

EXCELLENT

EXCELLENT

NONE

 LG729547728

Comments: This Laboratory Grown Diamond was created by Chemical Vapor Deposition (CVD) growth process.
Type IIa