



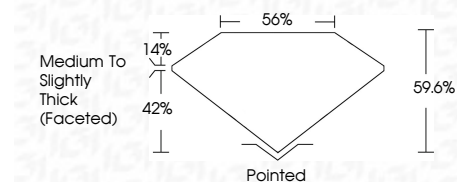
ELECTRONIC COPY

LG729546567
Report verification at igi.org



August 23, 2025
IGI Report Number **LG729546567**
Description **LABORATORY GROWN DIAMOND**
Shape and Cutting Style **HEART BRILLIANT**
Measurements **6.40 X 7.36 X 4.39 MM**

GRADING RESULTS
Carat Weight **1.21 CARAT**
Color Grade **F**
Clarity Grade **VVS 2**

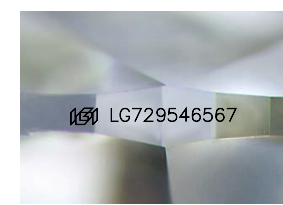
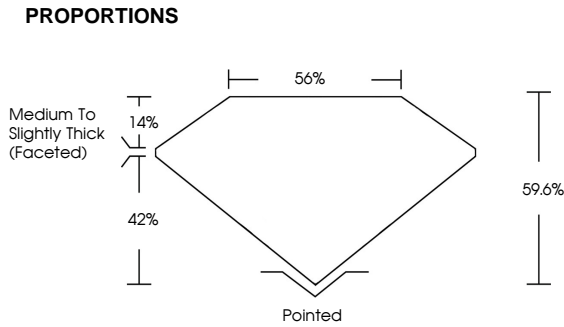


ADDITIONAL GRADING INFORMATION
Polish **EXCELLENT**
Symmetry **VERY GOOD**
Fluorescence **NONE**
Inscription(s) **IGI LG729546567**
Comments: This Laboratory Grown Diamond was created by Chemical Vapor Deposition (CVD) growth process. Type IIa



August 23, 2025
IGI Report No LG729546567
HEART BRILLIANT
6.40 X 7.36 X 4.39 MM
1.21 CARAT
F
VVS 2
59.6%
85%
Medium to Slightly Thick (Faceted)
Pointed
EXCELLENT
VERY GOOD
NONE
IGI LG729546567
Comments: This Laboratory Grown Diamond was created by Chemical Vapor Deposition (CVD) growth process. Type IIa

August 23, 2025
IGI Report Number **LG729546567**
Description **LABORATORY GROWN DIAMOND**
Shape and Cutting Style **HEART BRILLIANT**
Measurements **6.40 X 7.36 X 4.39 MM**
GRADING RESULTS
Carat Weight **1.21 CARAT**
Color Grade **F**
Clarity Grade **VVS 2**
ADDITIONAL GRADING INFORMATION
Polish **EXCELLENT**
Symmetry **VERY GOOD**
Fluorescence **NONE**
Inscription(s) **IGI LG729546567**
Comments: This Laboratory Grown Diamond was created by Chemical Vapor Deposition (CVD) growth process. Type IIa



Sample Image Used

COLOR

D	E	F	G	H	I	J	Faint	Very Light	Light
---	---	---	---	---	---	---	-------	------------	-------

CLARITY

IF	VS ¹⁻²	VS ¹⁻²	SI ¹⁻²	I ¹⁻³
Internally Flawless	Very Very Slightly Included	Very Slightly Included	Slightly Included	Included

