



**ELECTRONIC COPY**

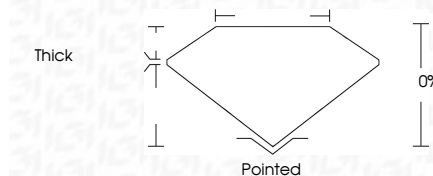
LG729544484  
Report verification at igi.org



September 1, 2025  
IGI Report Number **LG729544484**  
Description **LABORATORY GROWN DIAMOND**  
Shape and Cutting Style **STAR MODIFIED BRILLIANT**  
Measurements **14.68 X 12.75 X 7.94 MM**

**GRADING RESULTS**

Carat Weight **9.28 CARATS**  
Color Grade **E**  
Clarity Grade **VS 1**

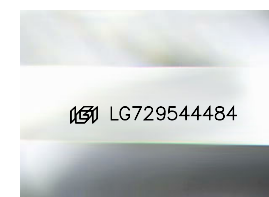


**ADDITIONAL GRADING INFORMATION**

Polish **EXCELLENT**  
Symmetry **EXCELLENT**  
Fluorescence **NONE**  
Inscription(s) **(IGI) LG729544484**  
Comments: This Laboratory Grown Diamond was created by Chemical Vapor Deposition (CVD) growth process. Type IIa

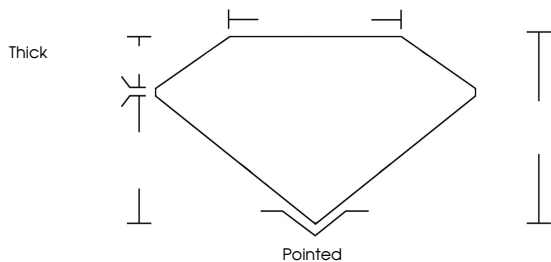


September 1, 2025  
IGI Report No LG729544484  
STAR MODIFIED BRILLIANT  
14.68 X 12.75 X 7.94 MM  
9.28 CARATS  
E  
VS 1  
0%  
0%  
Thick  
Pointed  
EXCELLENT  
EXCELLENT  
NONE  
(IGI) LG729544484  
Comments: This Laboratory Grown Diamond was created by Chemical Vapor Deposition (CVD) growth process. Type IIa

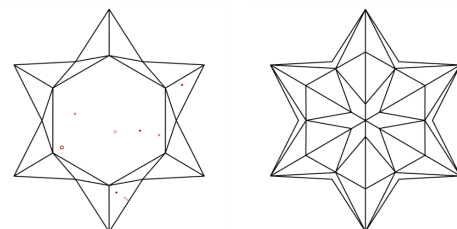


Sample Image Used

**PROPORTIONS**



**CLARITY CHARACTERISTICS**



**KEY TO SYMBOLS**

Red symbols indicate internal characteristics.  
Green symbols indicate external characteristics.

**COLOR**

D	E	F	G	H	I	J	Faint	Very Light	Light
---	---	---	---	---	---	---	-------	------------	-------

**CLARITY**

IF	VS <sup>1-2</sup>	VS <sup>1-2</sup>	SI <sup>1-2</sup>	I <sup>1-3</sup>
Internally Flawless	Very Very Slightly Included	Very Slightly Included	Slightly Included	Included

