



**ELECTRONIC COPY**

## LABORATORY GROWN DIAMOND REPORT

LG729539512  
Report verification at [igi.org](https://igi.org)

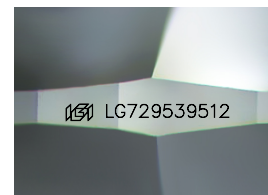
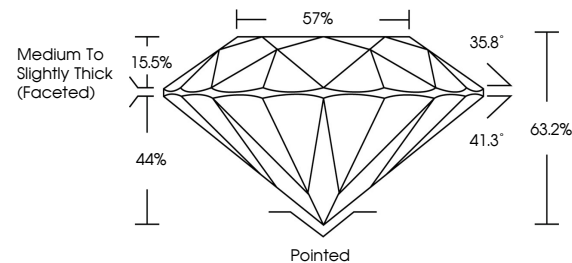
September 1, 2025	
IGI Report Number	LG729539512
Description	LABORATORY GROWN DIAMOND
Shape and Cutting Style	ROUND BRILLIANT
Measurements	7.61 - 7.67 X 4.83 MM
GRADING RESULTS	
Carat Weight	1.75 CARAT
Color Grade	D
Clarity Grade	VVS 2
Cut Grade	EXCELLENT

### ADDITIONAL GRADING INFORMATION

Polish	EXCELLENT
Symmetry	EXCELLENT
Fluorescence	NONE
Inscription(s)	 LG729539512

Comments: As Grown - No indication of post-growth treatment.  
This Laboratory Grown Diamond was created by High Pressure High Temperature (HPHT) growth process.  
Type II

## PROPORTIONS



Sample Image Used

## COLOR

D E F G H I J Faint Very Light Light

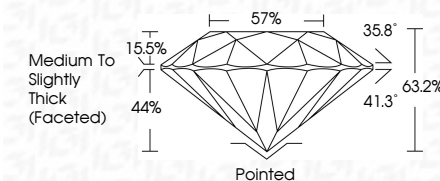
## CLARITY

FL	IF	VVS <sup>1-2</sup>	VS <sup>1-2</sup>	SI <sup>1-2</sup>	I <sup>1-3</sup>
Flawless	Internally Flawless	Very Very Slightly Included	Very Slightly Included	Slightly Included	Included

## LABORATORY GROWN DIAMOND REPORT



September 1, 2025	
IGI Report Number	LG729539512
Description	LABORATORY GROWN DIAMOND
Shape and Cutting Style	ROUND BRILLIANT
Measurements	7.61 - 7.67 X 4.83 MM
GRADING RESULTS	
Carat Weight	1.75 CARAT
Color Grade	D
Clarity Grade	VVS 2
Cut Grade	EXCELLENT



### ADDITIONAL GRADING INFORMATION

Polish	EXCELLENT
Symmetry	EXCELLENT
Fluorescence	NONE
Inscription(s)	<del>(G)</del> LG729539512
Comments:	As Grown - No indication of post-growth treatment.
This Laboratory Grown Diamond was created by High Pressure High Temperature (HPHT) growth process.	
Type II	



© IGI 2020, International Gemological Institute

FD - 10 20



THIS DOCUMENT WAS PRODUCED WITH THE FOLLOWING SECURITY MEASURES: SPECIAL DOCUMENT PAPER, INK SCREENS, WATERMARK, BACKGROUND DESIGNS, HOLOGRAM AND OTHER SECURITY FEATURES NOT LISTED AND DO EXCEED DOCUMENT SECURITY INDUSTRY GUIDELINES

**www.igi.org**

September 1, 2025  
IGI Report No LG7299  
ROUND BRILLIANT

7.61 - 7.67 X 4.83 MM

7.61 - 7.67 X 4.83 MM	1.75 CARAT
Carat Weight	

Catali Weiglin	I. 79 Catali
Color Grade	D

Clarity Grade	<b>WS 2</b>
---------------	-------------

Quality Grade	VVS 2
Cut Grade	EXCELLENT

Depth	63.2%
-------	-------

	57%
Table	
Girdle	

Girdle

	Pointed	Culet
in mm (x 1000)		

Cutler	Pointed
Polish	EXCELLENT

Symmetry

Fluorescence	NONE
Inscription(s)	1631 G729539512

Inscription(s)	1991 LG729539512

**Comments:**  
As Grown - No Indication of post-growth

As Grown - No Indication of post-growth treatment	Table Laboratory / Crown Diameter (mm)
1	1.5
2	2.0
3	2.5
4	3.0
5	3.5
6	4.0
7	4.5
8	5.0
9	5.5
10	6.0
11	6.5
12	7.0
13	7.5
14	8.0
15	8.5
16	9.0
17	9.5
18	10.0
19	10.5
20	11.0
21	11.5
22	12.0
23	12.5
24	13.0
25	13.5
26	14.0
27	14.5
28	15.0
29	15.5
30	16.0
31	16.5
32	17.0
33	17.5
34	18.0
35	18.5
36	19.0
37	19.5
38	20.0
39	20.5
40	21.0
41	21.5
42	22.0
43	22.5
44	23.0
45	23.5
46	24.0
47	24.5
48	25.0
49	25.5
50	26.0
51	26.5
52	27.0
53	27.5
54	28.0
55	28.5
56	29.0
57	29.5
58	30.0
59	30.5
60	31.0
61	31.5
62	32.0
63	32.5
64	33.0
65	33.5
66	34.0
67	34.5
68	35.0
69	35.5
70	36.0
71	36.5
72	37.0
73	37.5
74	38.0
75	38.5
76	39.0
77	39.5
78	40.0
79	40.5
80	41.0
81	41.5
82	42.0
83	42.5
84	43.0
85	43.5
86	44.0
87	44.5
88	45.0
89	45.5
90	46.0
91	46.5
92	47.0
93	47.5
94	48.0
95	48.5
96	49.0
97	49.5
98	50.0
99	50.5
100	51.0
101	51.5
102	52.0
103	52.5
104	53.0
105	53.5
106	54.0
107	54.5
108	55.0
109	55.5
110	56.0
111	56.5
112	57.0
113	57.5
114	58.0
115	58.5
116	59.0
117	59.5
118	60.0
119	60.5
120	61.0
121	61.5
122	62.0
123	62.5
124	63.0
125	63.5
126	64.0
127	64.5
128	65.0
129	65.5
130	66.0
131	66.5
132	67.0
133	67.5
134	68.0
135	68.5
136	69.0
137	69.5
138	70.0
139	70.5
140	71.0
141	71.5
142	72.0
143	72.5
144	73.0
145	73.5
146	74.0
147	74.5
148	75.0
149	75.5
150	76.0
151	76.5
152	77.0
153	77.5
154	78.0
155	78.5
156	79.0
157	79.5
158	80.0
159	80.5
160	81.0
16	

**This Laboratory Grown Diamond was created by High Pressure High**

Temperature (HPHT) growth process.  
Type II