



LABORATORY GROWN DIAMOND REPORT

August 23, 2025
 IGI Report Number **LG729535218**
 Description **LABORATORY GROWN DIAMOND**
 Shape and Cutting Style **SQUARE EMERALD CUT**
 Measurements **5.46 X 5.44 X 3.39 MM**

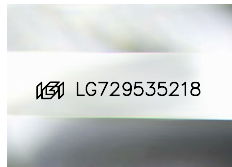
GRADING RESULTS

Carat Weight **0.92 CARAT**
 Color Grade **E**
 Clarity Grade **VVS 2**

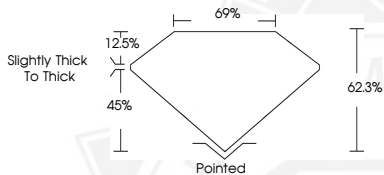
ADDITIONAL GRADING INFORMATION

Polish **VERY GOOD**
 Symmetry **VERY GOOD**
 Fluorescence **NONE**
 Inscription(s) **IGI LG729535218**

Comments: As Grown - No indication of post-growth treatment. This Laboratory Grown Diamond was created by High Pressure High Temperature (HPHT) growth process. Type II



Sample Image Used



August 23, 2025
 IGI Report Number **LG729535218**
SQUARE EMERALD CUT
LABORATORY GROWN DIAMOND
5.46 X 5.44 X 3.39 MM
 Carat Weight **0.92 CARAT**
 Color Grade **E**
 Clarity Grade **VVS 2**
 Polish **VERY GOOD**
 Symmetry **VERY GOOD**
 Fluorescence **NONE**
 Inscription(s) **IGI LG729535218**

Comments: As Grown - No indication of post-growth treatment. This Laboratory Grown Diamond was created by High Pressure High Temperature (HPHT) growth process. Type II



August 23, 2025
 IGI Report Number **LG729535218**
SQUARE EMERALD CUT
LABORATORY GROWN DIAMOND
5.46 X 5.44 X 3.39 MM
 Carat Weight **0.92 CARAT**
 Color Grade **E**
 Clarity Grade **VVS 2**
 Polish **VERY GOOD**
 Symmetry **VERY GOOD**
 Fluorescence **NONE**
 Inscription(s) **IGI LG729535218**

Comments: As Grown - No indication of post-growth treatment. This Laboratory Grown Diamond was created by High Pressure High Temperature (HPHT) growth process. Type II

THIS DOCUMENT WAS PRODUCED WITH THE FOLLOWING SECURITY MEASURES: SPECIAL DOCUMENT PAPER, INK SCREENS, WATERMARK, BACKGROUND DESIGNS, HOLOGRAM AND OTHER SECURITY FEATURES NOT LISTED AND DO EXCEED DOCUMENT SECURITY INDUSTRY GUIDELINES.