



ELECTRONIC COPY

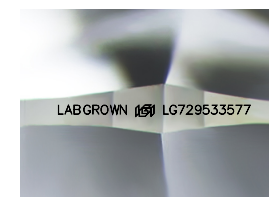
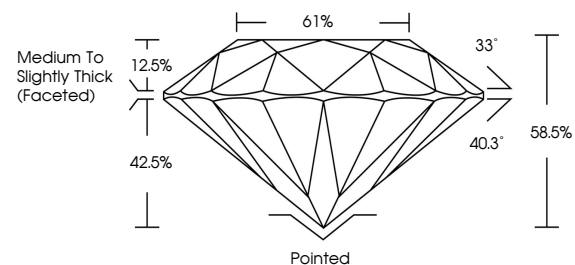
LG729533577
Report verification at igi.org



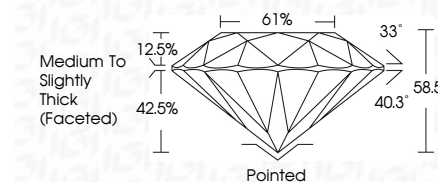
August 25, 2025
IGI Report Number **LG729533577**
Description **LABORATORY GROWN DIAMOND**
Shape and Cutting Style **ROUND BRILLIANT**
Measurements **13.01 - 13.07 X 7.63 MM**
GRADING RESULTS
Carat Weight **8.02 CARATS**
Color Grade **FANCY INTENSE PINK**
Clarity Grade **VVS 2**
Cut Grade **EXCELLENT**

August 25, 2025
IGI Report Number **LG729533577**
Description **LABORATORY GROWN DIAMOND**
Shape and Cutting Style **ROUND BRILLIANT**
Measurements **13.01 - 13.07 X 7.63 MM**
GRADING RESULTS
Carat Weight **8.02 CARATS**
Color Grade **FANCY INTENSE PINK**
Clarity Grade **VVS 2**
Cut Grade **EXCELLENT**

PROPORTIONS



Sample Image Used



ADDITIONAL GRADING INFORMATION
Polish **EXCELLENT**
Symmetry **EXCELLENT**
Fluorescence **SLIGHT**
Inscription(s) **LABGROWN (IGI) LG729533577**

Comments: This Laboratory Grown Diamond was created by Chemical Vapor Deposition (CVD) growth process.
Indications of post-growth treatment.

COLOR

D E F G H I J Faint Very Light Light

CLARITY

IF	VS ¹⁻²	VS ¹⁻²	SI ¹⁻²	I ¹⁻³
Internally Flawless	Very Very Slightly Included	Very Slightly Included	Slightly Included	Included

ADDITIONAL GRADING INFORMATION

Polish **EXCELLENT**
Symmetry **EXCELLENT**
Fluorescence **SLIGHT**
Inscription(s) **LABGROWN (IGI) LG729533577**
Comments: This Laboratory Grown Diamond was created by Chemical Vapor Deposition (CVD) growth process.
Indications of post-growth treatment.



IGI



August 25, 2025
IGI Report No **LG729533577**
ROUND BRILLIANT
13.01 - 13.07 X 7.63 MM
Carat Weight **8.02 CARATS**
Color Grade **FANCY INTENSE PINK**
Clarity Grade **VVS 2**
Cut Grade **EXCELLENT**
Depth **58.5%**
Table **12.5%**
Girdle **42.5%**
Crown Angle **33°**
Pavilion Angle **40.3°**
Girdle Thickness **Medium To Slightly Thick (Faceted)**
Cutler **Pointed**
Polish **EXCELLENT**
Symmetry **EXCELLENT**
Fluorescence **SLIGHT**
Inscriptions(s) **LABGROWN (IGI) LG729533577**
Comments: This Laboratory Grown Diamond was created by Chemical Vapor Deposition (CVD) growth process.
Indications of post-growth treatment.