



ELECTRONIC COPY

LABORATORY GROWN DIAMOND REPORT

| | |
|-------------------------|--------------------------|
| August 28, 2025 | |
| IGI Report Number | LG729533498 |
| Description | LABORATORY GROWN DIAMOND |
| Shape and Cutting Style | ROUND BRILLIANT |
| Measurements | 10.03 - 10.08 X 6.24 MM |
| GRADING RESULTS | |
| Carat Weight | 3.91 CARATS |
| Color Grade | D |
| Clarity Grade | INTERNALLY FLAWLESS |
| Cut Grade | IDEAL |

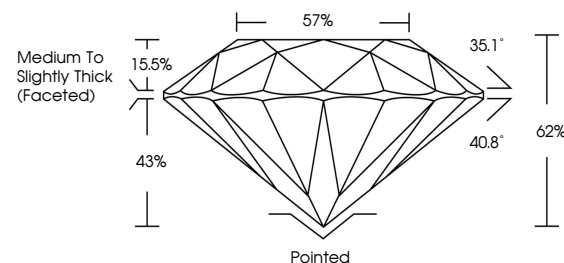
ADDITIONAL GRADING INFORMATION

| | |
|----------------|----------------|
| Polish | EXCELLENT |
| Symmetry | EXCELLENT |
| Fluorescence | NONE |
| Inscription(s) | 15 LG729533498 |

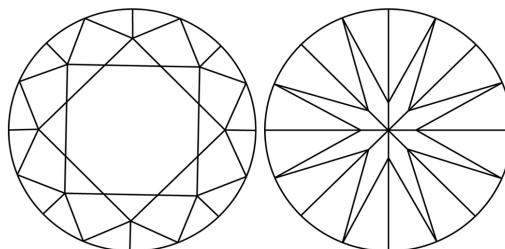
Comments: HEARTS & ARROWS
As Grown - No indication of post-growth treatment.
This Laboratory Grown Diamond was created by High
Pressure High Temperature (HPHT) growth process.
Type II

LG729533498
Report verification at igi.org

PROPORTIONS

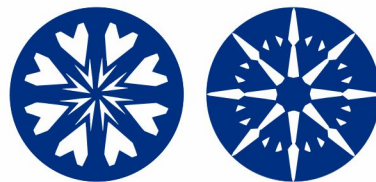


CLARITY CHARACTERISTICS

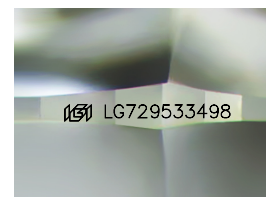


KEY TO SYMBOLS

Red symbols indicate internal characteristics.
Green symbols indicate external characteristics.



www.igi.org



Sample Image Used

COLOR

D E F G H I J Faint Very Light Light

CLARITY

IF VS¹⁻² VS¹⁻² SI¹⁻² I¹⁻³

| Internally Flawless | Very Very Slightly Included | Very Slightly Included | Slightly Included | Included |
|------------------------|--------------------------------|---------------------------|----------------------|----------|
|------------------------|--------------------------------|---------------------------|----------------------|----------|



© IGI 2020, International Gemological Institute

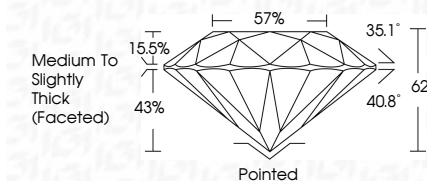
FD - 10 20

THIS DOCUMENT WAS PRODUCED WITH THE FOLLOWING SECURITY MEASURES: SPECIAL DOCUMENT PAPER, INK SCREENS, WATERMARK, BACKGROUND DESIGNS, HOLOGRAM AND OTHER SECURITY FEATURES NOT LISTED AND DO EXCEED DOCUMENT SECURITY INDUSTRY GUIDELINE

LABORATORY GROWN DIAMOND REPORT



| | |
|-------------------------|--------------------------|
| August 28, 2025 | |
| IGI Report Number | LG729533498 |
| Description | LABORATORY GROWN DIAMOND |
| Shape and Cutting Style | ROUND BRILLIANT |
| Measurements | 10.03 - 10.08 X 6.24 MM |
| GRADING RESULTS | |
| Carat Weight | 3.91 CARATS |
| Color Grade | D |
| Clarity Grade | INTERNALLY FLAWLESS |
| Cut Grade | IDEAL |



ADDITIONAL GRADING INFORMATION

| | |
|--|----------------------------|
| Polish | EXCELLENT |
| Symmetry | EXCELLENT |
| Fluorescence | NONE |
| Inscription(s) | (G) LG729533498 |
| Comments: HEARTS & ARROWS | |
| As Grown - No indication of post-growth treatment. | |
| This Laboratory Grown Diamond was created by High Pressure High Temperature (HPHT) growth process. | |
| Type II | |



| |
|--|
| August 28, 2026 |
| GJ Report No. LG7953A98 |
| TOWN OF BRILLIANT |
| 10.03 - 10.08 X 6.21 MM |
| Carat Weight |
| Color Grade |
| Clarity Grade |
| Cut Grade |
| Depth |
| Table |
| Girdle |
| Medium to Slightly Thick (Faceted) |
| Paired |
| EXCELLENT |
| EXCELLENT |
| NONE |
| #69 LG7953A98 |
| Comments: |
| -HARS & ARROWMS |
| -No indication of post-growth treatment. |
| This Laboratory Grown Diamond was created by High Pressure High Temperature (HPHT) growth process. |