



ELECTRONIC COPY

LG729531857
Report verification at igi.org



September 10, 2025
IGI Report Number **LG729531857**
Description **LABORATORY GROWN DIAMOND**
Shape and Cutting Style **ROUND BRILLIANT**
Measurements **7.47 - 7.52 X 4.49 MM**
GRADING RESULTS
Carat Weight **1.54 CARAT**
Color Grade **FANCY INTENSE PINK**
Clarity Grade **SI 1**
Cut Grade **IDEAL**

September 10, 2025
IGI Report Number **LG729531857**
Description **LABORATORY GROWN DIAMOND**
Shape and Cutting Style **ROUND BRILLIANT**
Measurements **7.47 - 7.52 X 4.49 MM**

GRADING RESULTS

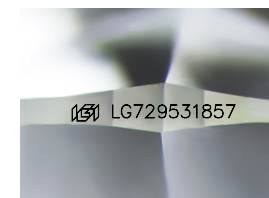
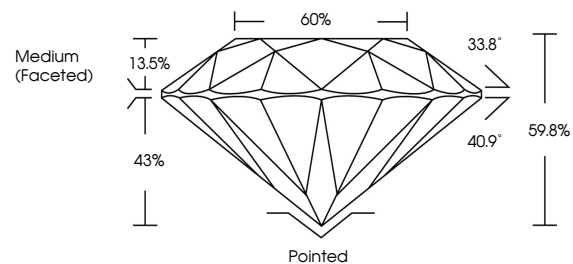
Carat Weight **1.54 CARAT**
Color Grade **FANCY INTENSE PINK**
Clarity Grade **SI 1**
Cut Grade **IDEAL**

ADDITIONAL GRADING INFORMATION

Polish **VERY GOOD**
Symmetry **EXCELLENT**
Fluorescence **SLIGHT**
Inscription(s) **LG729531857**

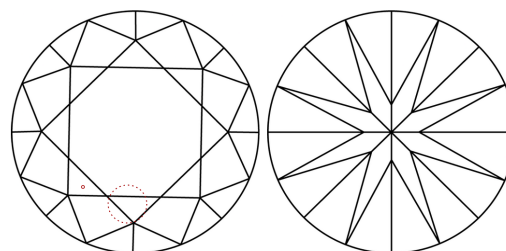
Comments: This Laboratory Grown Diamond was created by Chemical Vapor Deposition (CVD) growth process.
Indications of post-growth treatment.

PROPORTIONS



Sample Image Used

CLARITY CHARACTERISTICS



KEY TO SYMBOLS

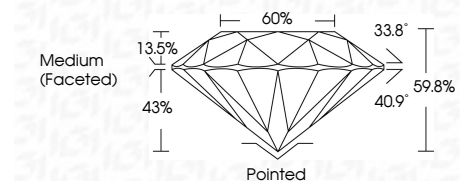
Red symbols indicate internal characteristics.
Green symbols indicate external characteristics.

COLOR

D E F G H I J Faint Very Light Light

CLARITY

IF	VS ¹⁻²	VS ¹⁻²	SI ¹⁻²	I ¹⁻³
Internally Flawless	Very Very Slightly Included	Very Slightly Included	Slightly Included	Included



ADDITIONAL GRADING INFORMATION

Polish **VERY GOOD**
Symmetry **EXCELLENT**
Fluorescence **SLIGHT**
Inscription(s) **LG729531857**
Comments: This Laboratory Grown Diamond was created by Chemical Vapor Deposition (CVD) growth process.
Indications of post-growth treatment.



September 10, 2025
IGI Report No LG729531857
ROUND BRILLIANT

1.54 CARAT
FANCY INTENSE PINK

SI 1
IDEAL

7.47 - 7.52 X 4.49 MM
Medium (Faceted)

Pointed
VERY GOOD
EXCELLENT
SLIGHT

1.54 CARAT
FANCY INTENSE PINK
SI 1
IDEAL
7.47 - 7.52 X 4.49 MM
Medium (Faceted)

Pointed
VERY GOOD
EXCELLENT
SLIGHT

Comments: This Laboratory Grown Diamond was created by Chemical Vapor Deposition (CVD) growth process.
Indications of post-growth treatment.