



ELECTRONIC COPY

LG729531798
Report verification at igi.org



September 17, 2025

IGI Report Number **LG729531798**

Description **LABORATORY GROWN DIAMOND**

Shape and Cutting Style **FLOWER MODIFIED BRILLIANT**

Measurements **6.99 X 6.90 X 5.56 MM**

GRADING RESULTS

Carat Weight **2.38 CARATS**

Color Grade **FANCY GREEN**

Clarity Grade **VS 1**

September 17, 2025
IGI Report Number **LG729531798**
Description **LABORATORY GROWN DIAMOND**
Shape and Cutting Style **FLOWER MODIFIED BRILLIANT**
Measurements **6.99 X 6.90 X 5.56 MM**

GRADING RESULTS

Carat Weight **2.38 CARATS**

Color Grade **FANCY GREEN**

Clarity Grade **VS 1**

ADDITIONAL GRADING INFORMATION

Polish **VERY GOOD**

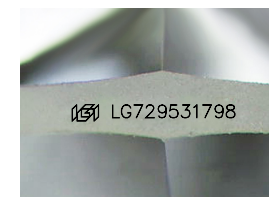
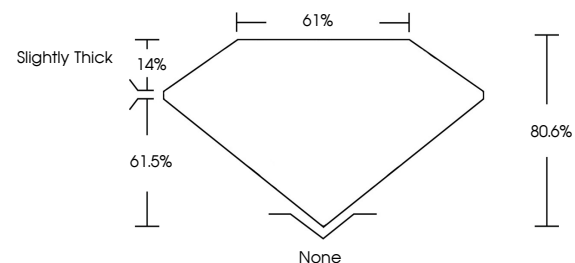
Symmetry **EXCELLENT**

Fluorescence **NONE**

Inscription(s) **IGI LG729531798**

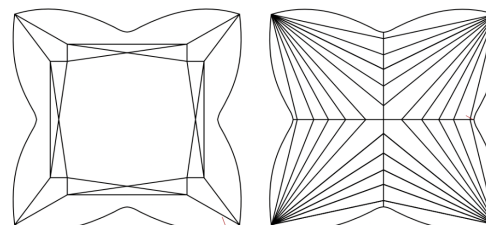
Comments: This Laboratory Grown Diamond was created by Chemical Vapor Deposition (CVD) growth process.
Indications of post-growth treatment.

PROPORTIONS



Sample Image Used

CLARITY CHARACTERISTICS



KEY TO SYMBOLS

Red symbols indicate internal characteristics.
Green symbols indicate external characteristics.

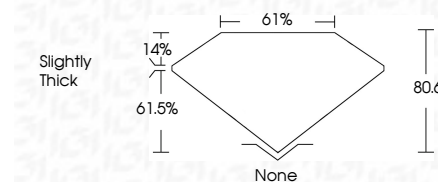
COLOR

D E F G H I J Faint Very Light Light

CLARITY

IF VS¹⁻² VS¹⁻² SI¹⁻² I¹⁻³

Internally Flawless Very Very Slightly Included Very Slightly Included Slightly Included Included



ADDITIONAL GRADING INFORMATION

Polish **VERY GOOD**

Symmetry **EXCELLENT**

Fluorescence **NONE**

Inscription(s) **IGI LG729531798**

Comments: This Laboratory Grown Diamond was created by Chemical Vapor Deposition (CVD) growth process.
Indications of post-growth treatment.



IGI



September 17, 2025
IGI Report No LG729531798
FLOWER MODIFIED BRILLIANT
6.99 X 6.90 X 5.56 MM
2.38 CARATS
FANCY GREEN
VS 1
80.6%
61%
Slightly Thick
None
VERY GOOD
EXCELLENT
NONE
IGI LG729531798

Comments: This Laboratory Grown Diamond was created by Chemical Vapor Deposition (CVD) growth process.
Indications of post-growth treatment.