



ELECTRONIC COPY

LABORATORY GROWN DIAMOND REPORT

| | |
|-------------------------|--------------------------|
| September 12, 2025 | |
| IGI Report Number | LG729531796 |
| Description | LABORATORY GROWN DIAMOND |
| Shape and Cutting Style | PRINCESS CUT |
| Measurements | 6.19 X 6.08 X 4.32 MM |

GRADING RESULTS

| | |
|---------------|----------------------------|
| Carat Weight | 1.52 CARAT |
| Color Grade | FANCY INTENSE BLUISH GREEN |
| Clarity Grade | VS 1 |

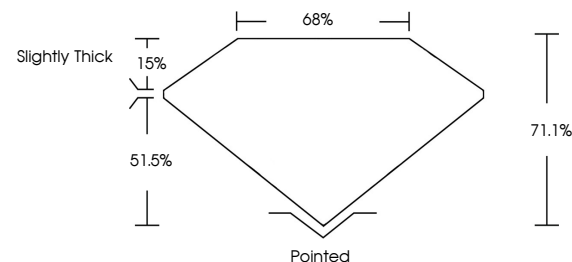
ADDITIONAL GRADING INFORMATION

| | |
|----------------|----------------|
| Polish | VERY GOOD |
| Symmetry | VERY GOOD |
| Fluorescence | NONE |
| Inscription(s) | 15 LG729531796 |

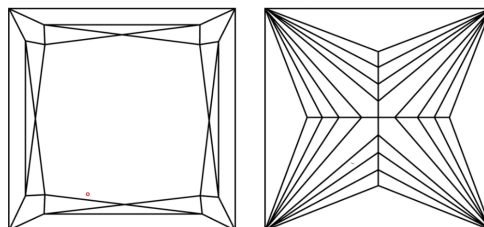
Comments: This Laboratory Grown Diamond was created by Chemical Vapor Deposition (CVD) growth process.
Indications of post-growth treatment.

LG729531796
Report verification at lgi.org

PROPORTIONS

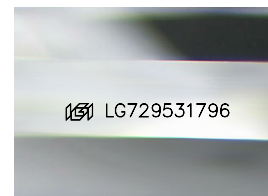


CLARITY CHARACTERISTICS



KEY TO SYMBOLS

Red symbols indicate internal characteristics.
Green symbols indicate external characteristics.



Sample Image Used

COLOR

D E F G H I J Faint Very Light Light

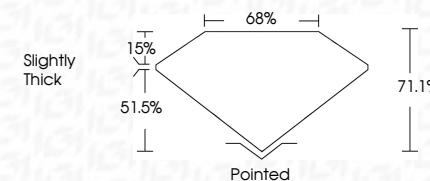
CLARITY

| IF | VS ¹⁻² | VS ¹⁻² | SI ¹⁻² | I ¹⁻³ |
|---------------------|-----------------------------|------------------------|-------------------|------------------|
| Internally Flawless | Very Very Slightly Included | Very Slightly Included | Slightly Included | Included |

LABORATORY GROWN DIAMOND REPORT



| | |
|-------------------------|----------------------------|
| September 12, 2025 | |
| IGI Report Number | LG729531796 |
| Description | LABORATORY GROWN DIAMOND |
| Shape and Cutting Style | PRINCESS CUT |
| Measurements | 6.19 X 6.08 X 4.32 MM |
| GRADING RESULTS | |
| Carat Weight | 1.52 CARAT |
| Color Grade | FANCY INTENSE BLUISH GREEN |
| Clarity Grade | VS 1 |



ADDITIONAL GRADING INFORMATION

| | |
|--|---|
| Polish | VERY GOOD |
| Symmetry | VERY GOOD |
| Fluorescence | NONE |
| Inscription(s) |  LG729531796 |
| <p>Comments: This Laboratory Grown Diamond was created by Chemical Vapor Deposition (CVD) growth process.</p> <p>Indications of post-growth treatment.</p> | |



© IGI 2020, International Gemological Institute

FD - 10 20

www.igi.org

THIS DOCUMENT WAS PRODUCED WITH THE FOLLOWING SECURITY MEASURES: SPECIAL DOCUMENT PAPER, INK SCREENS, WATERMARK, BACKGROUND DESIGNS, HOLOGRAM AND OTHER SECURITY FEATURES NOT LISTED AND DO EXCEED DOCUMENT SECURITY INDUSTRY GUIDELINES

September 12, 2025
 GI Report No LG729531796
 PRINCESS CUT

| | |
|-----------------------|----------------------------|
| 5.19 X 6.08 X 4.32 MM | Carat Weight 1.52 CARAT |
| | FANCY INTENSE GREEN VS 1 |
| | Color Grade VS 1 |
| | Depth 71.1% |
| | Table 68% |
| | Grade Slightly Thick |
| | Claret Painted |
| | Polish VERY GOOD |
| | Symmetry VERY GOOD |
| | Fluorescence NONE |
| | Lot# LC706537704 |

Comments:
This Laboratory Grown Diamond was
created by Chemical Vapor Deposition
(CVD) growth process.