



ELECTRONIC COPY

LG729531793
Report verification at igi.org



September 12, 2025

IGI Report Number LG729531793

Description LABORATORY GROWN DIAMOND

Shape and Cutting Style FLOWER MODIFIED BRILLIANT

Measurements 7.16 X 7.12 X 5.34 MM

GRADING RESULTS

Carat Weight 2.43 CARATS

Color Grade FANCY INTENSE GREEN

Clarity Grade VS 2

September 12, 2025
IGI Report Number LG729531793
Description LABORATORY GROWN DIAMOND
Shape and Cutting Style FLOWER MODIFIED BRILLIANT
Measurements 7.16 X 7.12 X 5.34 MM

GRADING RESULTS

Carat Weight 2.43 CARATS

Color Grade FANCY INTENSE GREEN

Clarity Grade VS 2

ADDITIONAL GRADING INFORMATION

Polish VERY GOOD

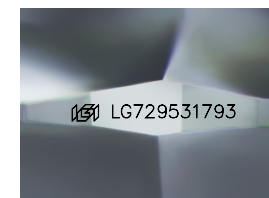
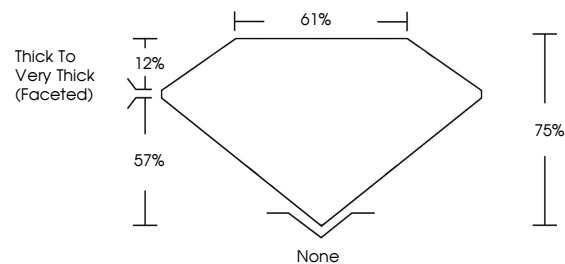
Symmetry VERY GOOD

Fluorescence NONE

Inscription(s) IGI LG729531793

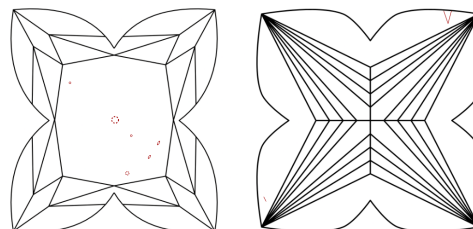
Comments: This Laboratory Grown Diamond was created by Chemical Vapor Deposition (CVD) growth process. Indications of post-growth treatment.

PROPORTIONS



Sample Image Used

CLARITY CHARACTERISTICS



KEY TO SYMBOLS

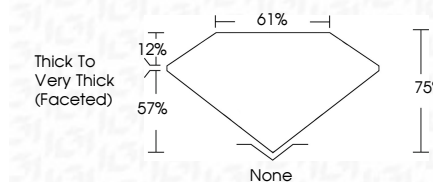
Red symbols indicate internal characteristics. Green symbols indicate external characteristics.

COLOR

D E F G H I J Faint Very Light Light

CLARITY

IF VS 1-2 VS 1-2 SI 1-2 I 1-3
Internally Flawless Very Very Slightly Included Very Slightly Included Slightly Included Included



ADDITIONAL GRADING INFORMATION

Polish VERY GOOD

Symmetry VERY GOOD

Fluorescence NONE

Inscription(s) IGI LG729531793

Comments: This Laboratory Grown Diamond was created by Chemical Vapor Deposition (CVD) growth process. Indications of post-growth treatment.



IGI



September 12, 2025
IGI Report No LG729531793
FLOWER MODIFIED BRILLIANT
2.43 CARATS
FANCY INTENSE GREEN
VS 2
7.16 X 7.12 X 5.34 MM
Color Grade FANCY INTENSE GREEN
Clarity Grade VS 2
Depth 76%
Table 61%
Girdle Thick to Very Thick (Faceted)
Culet None
Polish VERY GOOD
Symmetry VERY GOOD
Fluorescence NONE
Inscription(s) IGI LG729531793
Comments: This Laboratory Grown Diamond was created by Chemical Vapor Deposition (CVD) growth process. Indications of post-growth treatment.