



**ELECTRONIC COPY**

LG729526350  
Report verification at igi.org



August 22, 2025  
IGI Report Number **LG729526350**  
Description **LABORATORY GROWN DIAMOND**  
Shape and Cutting Style **CUT CORNERED  
RECTANGULAR MODIFIED  
BRILLIANT**  
Measurements **6.70 X 5.03 X 3.53 MM**  
**GRADING RESULTS**  
Carat Weight **1.15 CARAT**  
Color Grade **FANCY YELLOW**  
Clarity Grade **VS 1**

**LABORATORY GROWN DIAMOND REPORT**

August 22, 2025  
IGI Report Number **LG729526350**  
Description **LABORATORY GROWN DIAMOND**  
Shape and Cutting Style **CUT CORNERED RECTANGULAR  
MODIFIED BRILLIANT**  
Measurements **6.70 X 5.03 X 3.53 MM**

**GRADING RESULTS**

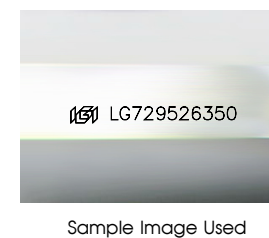
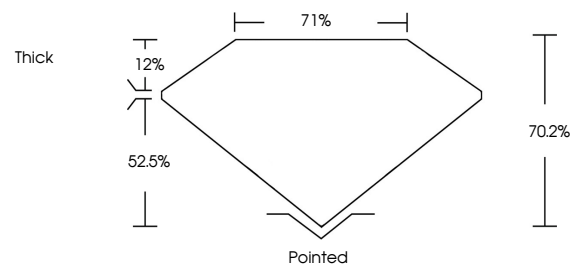
Carat Weight **1.15 CARAT**  
Color Grade **FANCY YELLOW**  
Clarity Grade **VS 1**

**ADDITIONAL GRADING INFORMATION**

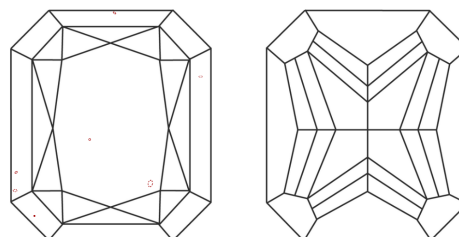
Polish **EXCELLENT**  
Symmetry **EXCELLENT**  
Fluorescence **NONE**  
Inscription(s) **IGI LG729526350**

Comments: This Laboratory Grown Diamond was created by Chemical Vapor Deposition (CVD) growth process.

**PROPORTIONS**



**CLARITY CHARACTERISTICS**



**KEY TO SYMBOLS**

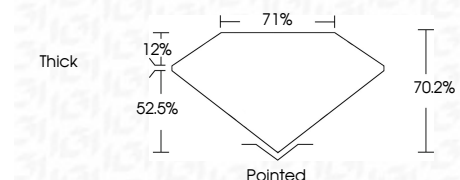
Red symbols indicate internal characteristics.  
Green symbols indicate external characteristics.

**COLOR**

D E F G H I J Faint Very Light Light

**CLARITY**

IF	VS <sup>1-2</sup>	VS <sup>1-2</sup>	SI <sup>1-2</sup>	I <sup>1-3</sup>
Internally Flawless	Very Very Slightly Included	Very Slightly Included	Slightly Included	Included



**ADDITIONAL GRADING INFORMATION**

Polish **EXCELLENT**  
Symmetry **EXCELLENT**  
Fluorescence **NONE**  
Inscription(s) **IGI LG729526350**  
Comments: This Laboratory Grown Diamond was created by Chemical Vapor Deposition (CVD) growth process.



August 22, 2025  
IGI Report No LG729526350  
CUT CORNERED RECT. MODIFIED BRILLIANT  
6.70 X 5.03 X 3.53 MM  
1.15 CARAT  
FANCY YELLOW  
VS 1  
70.2%  
71%  
Thick  
Pointed  
EXCELLENT  
EXCELLENT  
NONE  
IGI LG729526350  
Comments: This Laboratory Grown Diamond was created by Chemical Vapor Deposition (CVD) growth process.