



**ELECTRONIC COPY**

LG729526224  
Report verification at igi.org



September 5, 2025  
IGI Report Number **LG729526224**  
Description **LABORATORY GROWN DIAMOND**  
Shape and Cutting Style **SHIELD CUT**  
Measurements **10.32 X 7.66 X 4.31 MM**  
**GRADING RESULTS**  
Carat Weight **1.83 CARAT**  
Color Grade **E**  
Clarity Grade **VVS 2**

**LABORATORY GROWN DIAMOND REPORT**

September 5, 2025  
IGI Report Number **LG729526224**  
Description **LABORATORY GROWN DIAMOND**  
Shape and Cutting Style **SHIELD CUT**  
Measurements **10.32 X 7.66 X 4.31 MM**

**GRADING RESULTS**

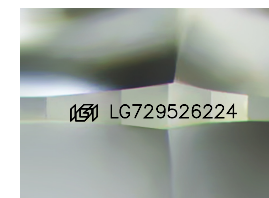
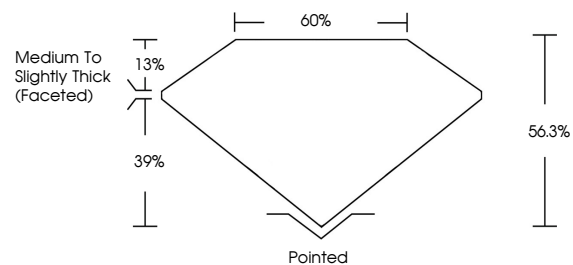
Carat Weight **1.83 CARAT**  
Color Grade **E**  
Clarity Grade **VVS 2**

**ADDITIONAL GRADING INFORMATION**

Polish **EXCELLENT**  
Symmetry **EXCELLENT**  
Fluorescence **NONE**  
Inscription(s) **IGI LG729526224**

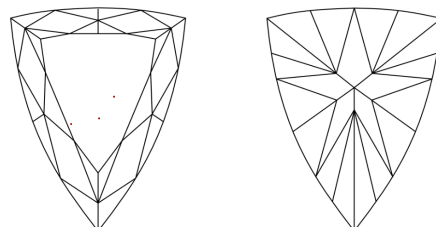
Comments: This Laboratory Grown Diamond was created by Chemical Vapor Deposition (CVD) growth process. Type IIa

**PROPORTIONS**



Sample Image Used

**CLARITY CHARACTERISTICS**



**KEY TO SYMBOLS**

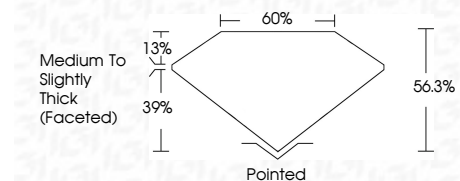
Red symbols indicate internal characteristics.  
Green symbols indicate external characteristics.

**COLOR**

D E F G H I J Faint Very Light Light

**CLARITY**

|                     |                             |                        |                   |                  |
|---------------------|-----------------------------|------------------------|-------------------|------------------|
| IF                  | VS <sup>1-2</sup>           | VS <sup>1-2</sup>      | SI <sup>1-2</sup> | I <sup>1-3</sup> |
| Internally Flawless | Very Very Slightly Included | Very Slightly Included | Slightly Included | Included         |



**ADDITIONAL GRADING INFORMATION**

Polish **EXCELLENT**  
Symmetry **EXCELLENT**  
Fluorescence **NONE**  
Inscription(s) **IGI LG729526224**  
Comments: This Laboratory Grown Diamond was created by Chemical Vapor Deposition (CVD) growth process. Type IIa



September 5, 2025  
IGI Report No. LG729526224  
**SHIELD CUT**  
10.32 X 7.66 X 4.31 MM  
1.83 CARAT  
Color Grade **E**  
Clarity Grade **VVS 2**  
Depth **56.3%**  
Table **60%**  
Girdle **Medium to Slightly Thick (Faceted)**  
Culet **Pointed**  
Polish **EXCELLENT**  
Symmetry **EXCELLENT**  
Fluorescence **NONE**  
Inscription(s) **IGI LG729526224**  
Comments: This Laboratory Grown Diamond was created by Chemical Vapor Deposition (CVD) growth process. Type IIa