



ELECTRONIC COPY

LG729526125
Report verification at igi.org



August 25, 2025
IGI Report Number **LG729526125**

Description **LABORATORY GROWN DIAMOND**

Shape and Cutting Style **SQUARE EMERALD CUT**

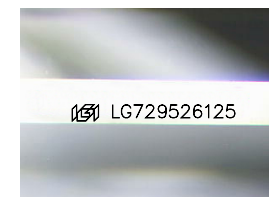
Measurements **11.02 X 10.99 X 7.37 MM**

GRADING RESULTS

Carat Weight **8.58 CARATS**

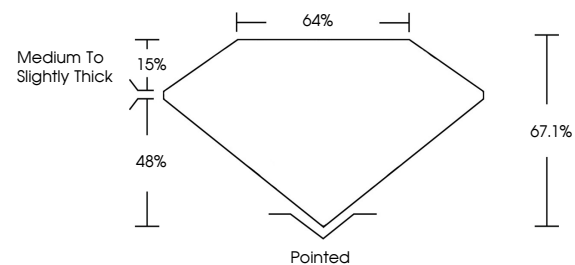
Color Grade **D**

Clarity Grade **VVS 2**

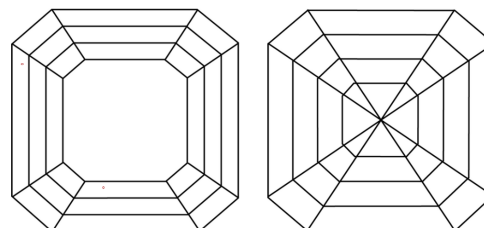


Sample Image Used

PROPORTIONS



CLARITY CHARACTERISTICS



KEY TO SYMBOLS

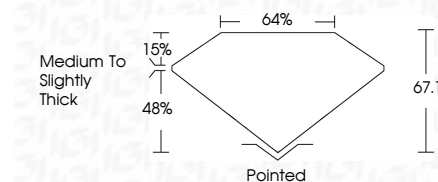
Red symbols indicate internal characteristics.
Green symbols indicate external characteristics.

COLOR

D E F G H I J Faint Very Light Light

CLARITY

IF	VS ¹⁻²	VS ¹⁻²	SI ¹⁻²	I ¹⁻³
Internally Flawless	Very Very Slightly Included	Very Slightly Included	Slightly Included	Included



ADDITIONAL GRADING INFORMATION

Polish **EXCELLENT**

Symmetry **EXCELLENT**

Fluorescence **NONE**

Inscription(s) **IGI LG729526125**

Comments: This Laboratory Grown Diamond was created by Chemical Vapor Deposition (CVD) growth process. Type IIa



IGI



August 25, 2025
IGI Report No LG729526125
SQUARE EMERALD CUT
11.02 X 10.99 X 7.37 MM
8.58 CARATS
D
VVS 2
67.1%
48%
15%
Pointed
EXCELLENT
EXCELLENT
NONE
IGI LG729526125

Comments: This Laboratory Grown Diamond was created by Chemical Vapor Deposition (CVD) growth process. Type IIa