



**ELECTRONIC COPY**

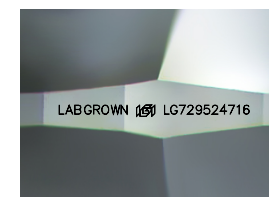
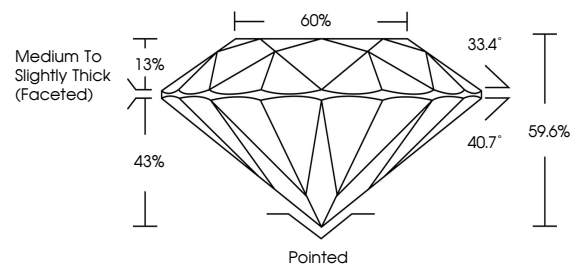
LG729524716  
Report verification at [igi.org](http://igi.org)



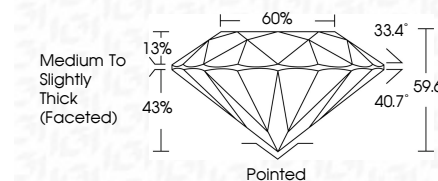
August 23, 2025  
IGI Report Number **LG729524716**  
Description **LABORATORY GROWN DIAMOND**  
Shape and Cutting Style **ROUND BRILLIANT**  
Measurements **13.68 - 13.72 X 8.16 MM**  
**GRADING RESULTS**  
Carat Weight **9.36 CARATS**  
Color Grade **FANCY INTENSE PINK**  
Clarity Grade **VVS 2**  
Cut Grade **IDEAL**

August 23, 2025  
IGI Report Number **LG729524716**  
Description **LABORATORY GROWN DIAMOND**  
Shape and Cutting Style **ROUND BRILLIANT**  
Measurements **13.68 - 13.72 X 8.16 MM**  
**GRADING RESULTS**  
Carat Weight **9.36 CARATS**  
Color Grade **FANCY INTENSE PINK**  
Clarity Grade **VVS 2**  
Cut Grade **IDEAL**

**PROPORTIONS**



Sample Image Used



**ADDITIONAL GRADING INFORMATION**  
Polish **EXCELLENT**  
Symmetry **EXCELLENT**  
Fluorescence **STRONG**  
Inscription(s) **LABGROWN (IGI) LG729524716**

Comments: This Laboratory Grown Diamond was created by Chemical Vapor Deposition (CVD) growth process.  
Indications of post-growth treatment.

**COLOR**

D E F G H I J Faint Very Light Light

**CLARITY**

IF	VS <sup>1-2</sup>	VS <sup>1-2</sup>	SI <sup>1-2</sup>	I <sup>1-3</sup>
Internally Flawless	Very Very Slightly Included	Very Slightly Included	Slightly Included	Included

**ADDITIONAL GRADING INFORMATION**

Polish **EXCELLENT**  
Symmetry **EXCELLENT**  
Fluorescence **STRONG**  
Inscription(s) **LABGROWN (IGI) LG729524716**  
Comments: This Laboratory Grown Diamond was created by Chemical Vapor Deposition (CVD) growth process.  
Indications of post-growth treatment.



**IGI**

August 23, 2025  
IGI Report No **LG729524716**  
**ROUND BRILLIANT**  
**13.68 - 13.72 X 8.16 MM**  
**9.36 CARATS**  
**FANCY INTENSE PINK**  
**VVS 2**  
**IDEAL**  
**59.6%**  
**60%**  
**Medium To Slightly Thick (Faceted)**  
**Pointed**  
**EXCELLENT**  
**EXCELLENT**  
**STRONG**  
**LABGROWN (IGI) LG729524716**  
Comments: This Laboratory Grown Diamond was created by Chemical Vapor Deposition (CVD) growth process.  
Indications of post-growth treatment.