



**ELECTRONIC COPY**

LG729523002  
Report verification at igi.org



August 27, 2025  
IGI Report Number **LG729523002**  
Description **LABORATORY GROWN DIAMOND**  
Shape and Cutting Style **PRINCESS CUT**  
Measurements **9.65 X 9.47 X 6.59 MM**  
**GRADING RESULTS**  
Carat Weight **5.39 CARATS**  
Color Grade **FANCY VIVID GREEN**  
Clarity Grade **VVS 2**

August 27, 2025  
IGI Report Number **LG729523002**  
Description **LABORATORY GROWN DIAMOND**  
Shape and Cutting Style **PRINCESS CUT**  
Measurements **9.65 X 9.47 X 6.59 MM**

**GRADING RESULTS**

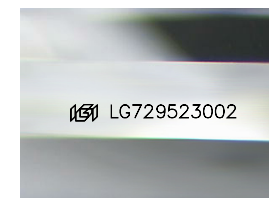
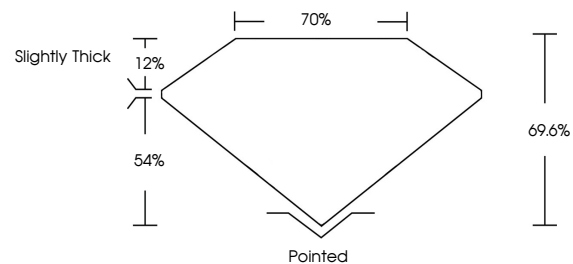
Carat Weight **5.39 CARATS**  
Color Grade **FANCY VIVID GREEN**  
Clarity Grade **VVS 2**

**ADDITIONAL GRADING INFORMATION**

Polish **EXCELLENT**  
Symmetry **EXCELLENT**  
Fluorescence **VERY SLIGHT**  
Inscription(s) **IGI LG729523002**

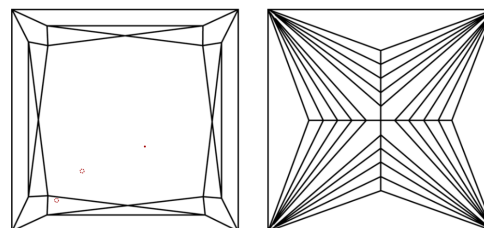
Comments: This Laboratory Grown Diamond was created by Chemical Vapor Deposition (CVD) growth process. Indications of post-growth treatment.

**PROPORTIONS**



Sample Image Used

**CLARITY CHARACTERISTICS**



**KEY TO SYMBOLS**

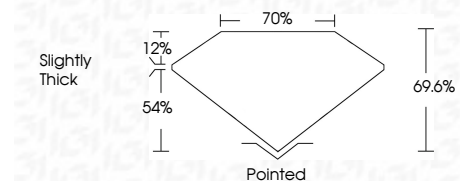
Red symbols indicate internal characteristics.  
Green symbols indicate external characteristics.

**COLOR**

D E F G H I J Faint Very Light Light

**CLARITY**

IF	VS <sup>1-2</sup>	VS <sup>1-2</sup>	SI <sup>1-2</sup>	I <sup>1-3</sup>
Internally Flawless	Very Very Slightly Included	Very Slightly Included	Slightly Included	Included



**ADDITIONAL GRADING INFORMATION**

Polish **EXCELLENT**  
Symmetry **EXCELLENT**  
Fluorescence **VERY SLIGHT**  
Inscription(s) **IGI LG729523002**  
Comments: This Laboratory Grown Diamond was created by Chemical Vapor Deposition (CVD) growth process. Indications of post-growth treatment.



**IGI**



August 27, 2025  
IGI Report No LG729523002  
PRINCESS CUT  
5.39 CARATS  
Carat Weight  
FANCY VIVID GREEN  
Color Grade  
VVS 2  
Clarity Grade  
69.6%  
70%  
Slightly Thick  
Pointed  
Polish  
EXCELLENT  
Symmetry  
EXCELLENT  
Fluorescence  
VERY SLIGHT  
Inscription(s)  
IGI LG729523002  
Comments: This Laboratory Grown Diamond was created by Chemical Vapor Deposition (CVD) growth process. Indications of post-growth treatment.