



**ELECTRONIC COPY**

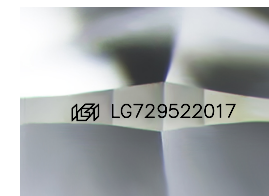
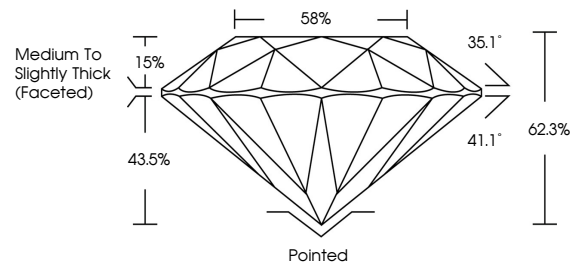
LG729522017  
Report verification at igi.org



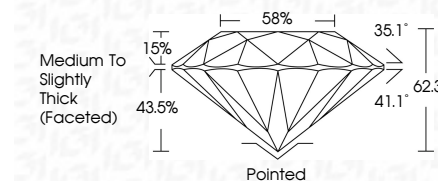
August 23, 2025  
IGI Report Number **LG729522017**  
Description **LABORATORY GROWN DIAMOND**  
Shape and Cutting Style **ROUND BRILLIANT**  
Measurements **6.47 - 6.51 X 4.04 MM**  
**GRADING RESULTS**  
Carat Weight **1.05 CARAT**  
Color Grade **FANCY VIVID PINK**  
Clarity Grade **VS 1**  
Cut Grade **IDEAL**

August 23, 2025  
IGI Report Number **LG729522017**  
Description **LABORATORY GROWN DIAMOND**  
Shape and Cutting Style **ROUND BRILLIANT**  
Measurements **6.47 - 6.51 X 4.04 MM**  
**GRADING RESULTS**  
Carat Weight **1.05 CARAT**  
Color Grade **FANCY VIVID PINK**  
Clarity Grade **VS 1**  
Cut Grade **IDEAL**

**PROPORTIONS**



Sample Image Used



**ADDITIONAL GRADING INFORMATION**

Polish **EXCELLENT**  
Symmetry **EXCELLENT**  
Fluorescence **STRONG**  
Inscription(s) **IGI LG729522017**

Comments: This Laboratory Grown Diamond was created by Chemical Vapor Deposition (CVD) growth process.  
Indications of post-growth treatment.

**ADDITIONAL GRADING INFORMATION**

Polish **EXCELLENT**  
Symmetry **EXCELLENT**  
Fluorescence **STRONG**  
Inscription(s) **IGI LG729522017**  
Comments: This Laboratory Grown Diamond was created by Chemical Vapor Deposition (CVD) growth process.  
Indications of post-growth treatment.

**COLOR**

D E F G H I J Faint Very Light Light

**CLARITY**

IF	VS <sup>1-2</sup>	VS <sup>1-2</sup>	SI <sup>1-2</sup>	I <sup>1-3</sup>
Internally Flawless	Very Very Slightly Included	Very Slightly Included	Slightly Included	Included



**IGI**



August 23, 2025  
IGI Report No LG729522017  
**ROUND BRILLIANT**  
6.47 - 6.51 X 4.04 MM  
Carat Weight **1.05 CARAT**  
Color Grade **FANCY VIVID PINK**  
Clarity Grade **VS 1**  
Cut Grade **IDEAL**  
Depth **62.3%**  
Table **88%**  
Girdle **Medium To Slightly Thick (Faceted)**  
Culet **Pointed**  
Polish **EXCELLENT**  
Symmetry **EXCELLENT**  
Fluorescence **STRONG**  
Inscriptions(s) **IGI LG729522017**  
Comments: This Laboratory Grown Diamond was created by Chemical Vapor Deposition (CVD) growth process.  
Indications of post-growth treatment.