



ELECTRONIC COPY

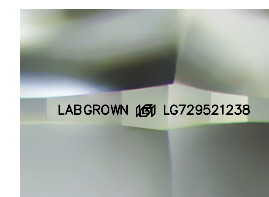
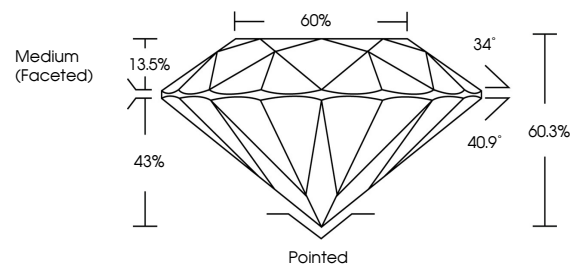
LG729521238
Report verification at igi.org



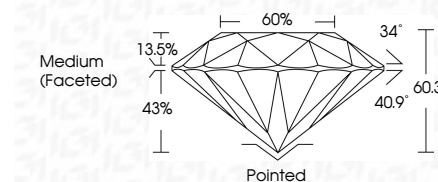
August 23, 2025
IGI Report Number **LG729521238**
Description **LABORATORY GROWN DIAMOND**
Shape and Cutting Style **ROUND BRILLIANT**
Measurements **13.29 - 13.37 X 8.04 MM**
GRADING RESULTS
Carat Weight **8.79 CARATS**
Color Grade **FANCY INTENSE PINK**
Clarity Grade **VS 1**
Cut Grade **IDEAL**

August 23, 2025
IGI Report Number **LG729521238**
Description **LABORATORY GROWN DIAMOND**
Shape and Cutting Style **ROUND BRILLIANT**
Measurements **13.29 - 13.37 X 8.04 MM**
GRADING RESULTS
Carat Weight **8.79 CARATS**
Color Grade **FANCY INTENSE PINK**
Clarity Grade **VS 1**
Cut Grade **IDEAL**

PROPORTIONS



Sample Image Used



ADDITIONAL GRADING INFORMATION

Polish **EXCELLENT**
Symmetry **EXCELLENT**
Fluorescence **STRONG**
Inscription(s) **LABGROWN (IGI) LG729521238**

Comments: This Laboratory Grown Diamond was created by Chemical Vapor Deposition (CVD) growth process.
Indications of post-growth treatment.

COLOR

D E F G H I J Faint Very Light Light

CLARITY

IF	VS ¹⁻²	VS ¹⁻²	SI ¹⁻²	I ¹⁻³
Internally Flawless	Very Very Slightly Included	Very Slightly Included	Slightly Included	Included

ADDITIONAL GRADING INFORMATION

Polish **EXCELLENT**
Symmetry **EXCELLENT**
Fluorescence **STRONG**
Inscription(s) **LABGROWN (IGI) LG729521238**
Comments: This Laboratory Grown Diamond was created by Chemical Vapor Deposition (CVD) growth process.
Indications of post-growth treatment.



August 23, 2025
IGI Report No LG729521238
ROUND BRILLIANT
13.29 - 13.37 X 8.04 MM
8.79 CARATS
FANCY INTENSE PINK
VS 1
IDEAL
60.3%
Medium (Faceted)
Pointed
EXCELLENT
EXCELLENT
STRONG
LABGROWN (IGI) LG729521238
Comments: This Laboratory Grown Diamond was created by Chemical Vapor Deposition (CVD) growth process.
Indications of post-growth treatment.