



ELECTRONIC COPY

LABORATORY GROWN DIAMOND REPORT

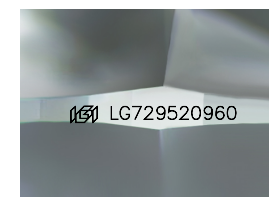
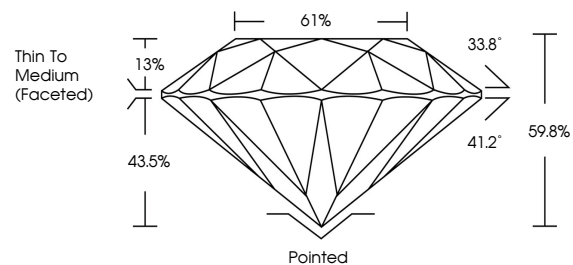
August 23, 2025
IGI Report Number LG729520960
Description LABORATORY GROWN DIAMOND
Shape and Cutting Style ROUND BRILLIANT
Measurements 9.93 - 9.95 X 5.95 MM
GRADING RESULTS
Carat Weight 3.58 CARATS
Color Grade E
Clarity Grade VVS 2
Cut Grade EXCELLENT

ADDITIONAL GRADING INFORMATION

Polish EXCELLENT
Symmetry EXCELLENT
Fluorescence NONE
Inscription(s) IGI LG729520960

Comments: This Laboratory Grown Diamond was created by Chemical Vapor Deposition (CVD) growth process. Type IIa

PROPORTIONS



Sample Image Used

COLOR

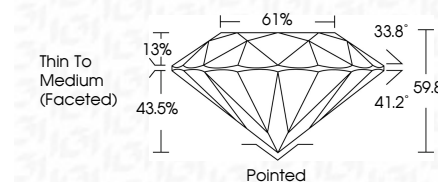
D E F G H I J Faint Very Light Light

CLARITY

IF WS 1-2 VS 1-2 SI 1-2 I 1-3
Internally Flawless Very Very Slightly Included Very Slightly Included Slightly Included Included



August 23, 2025
IGI Report Number LG729520960
Description LABORATORY GROWN DIAMOND
Shape and Cutting Style ROUND BRILLIANT
Measurements 9.93 - 9.95 X 5.95 MM
GRADING RESULTS
Carat Weight 3.58 CARATS
Color Grade E
Clarity Grade VVS 2
Cut Grade EXCELLENT



ADDITIONAL GRADING INFORMATION

Polish EXCELLENT
Symmetry EXCELLENT
Fluorescence NONE
Inscription(s) IGI LG729520960
Comments: This Laboratory Grown Diamond was created by Chemical Vapor Deposition (CVD) growth process. Type IIa



August 23, 2025
IGI Report No LG729520960
ROUND BRILLIANT
9.93 - 9.95 X 5.95 MM
3.58 CARATS E
VVS 2 EXCELLENT EXCELLENT
61% Thin To Medium (Faceted)
Pointed EXCELLENT EXCELLENT NONE NONE
IGI LG729520960
Comments: This Laboratory Grown Diamond was created by Chemical Vapor Deposition (CVD) growth process. Type IIa