



August 25, 2025

IGI Report Number **LG729516444**

KITE STEP CUT

LABORATORY GROWN DIAMOND

8.18 X 5.02 X 2.71 MM

Carat Weight **0.52 CARAT**

Color Grade **FANCY VIVID BLUE**

Clarity Grade **VVS 2**

Polish **EXCELLENT**

Symmetry **EXCELLENT**

Fluorescence **NONE**

Inscription(s) **IGI LG729516444**

Comments: This Laboratory Grown Diamond was created by Chemical Vapor Deposition (CVD) growth process. Indications of post-growth treatment.

LABORATORY GROWN DIAMOND REPORT

August 25, 2025

IGI Report Number

LG729516444

Description

LABORATORY GROWN DIAMOND

Shape and Cutting Style

KITE STEP CUT

Measurements

8.18 X 5.02 X 2.71 MM

GRADING RESULTS

Carat Weight

0.52 CARAT

Color Grade

FANCY VIVID BLUE

Clarity Grade

VVS 2

ADDITIONAL GRADING INFORMATION

Polish

EXCELLENT

Symmetry

EXCELLENT

Fluorescence

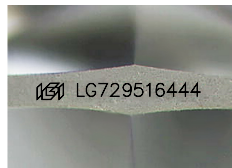
NONE

Inscription(s)

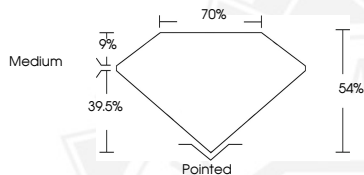
IGI LG729516444

Comments: This Laboratory Grown Diamond was created by Chemical Vapor Deposition (CVD) growth process.

Indications of post-growth treatment.



Sample Image Used



August 25, 2025

IGI Report Number **LG729516444**

KITE STEP CUT

LABORATORY GROWN DIAMOND

8.18 X 5.02 X 2.71 MM

Carat Weight **0.52 CARAT**

Color Grade **FANCY VIVID BLUE**

Clarity Grade **VVS 2**

Polish **EXCELLENT**

Symmetry **EXCELLENT**

Fluorescence **NONE**

Inscription(s) **IGI LG729516444**

Comments: This Laboratory Grown Diamond was created by Chemical Vapor Deposition (CVD) growth process. Indications of post-growth treatment.



THIS DOCUMENT WAS PRODUCED WITH THE FOLLOWING SECURITY MEASURES: SPECIAL DOCUMENT PAPER, INK SCREENS, WATERMARK, BACKGROUND DESIGNS, HOLOGRAM AND OTHER SECURITY FEATURES NOT LISTED AND DO EXCEED DOCUMENT SECURITY INDUSTRY GUIDELINES.