



LABORATORY GROWN DIAMOND REPORT

August 23, 2025
 IGI Report Number **LG729516420**
 Description **LABORATORY GROWN DIAMOND**
 Shape and Cutting Style **ROUND BRILLIANT**
 Measurements **4.76 - 4.79 X 2.98 MM**

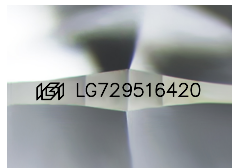
GRADING RESULTS

Carat Weight **0.41 CARAT**
 Color Grade **FANCY VIVID PINK**
 Clarity Grade **VVS 2**
 Cut Grade **IDEAL**

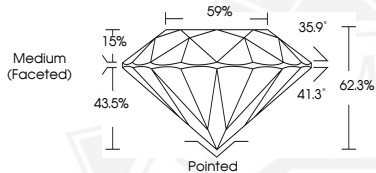
ADDITIONAL GRADING INFORMATION

Polish **EXCELLENT**
 Symmetry **EXCELLENT**
 Fluorescence **STRONG**
 Inscription(s) **IGI LG729516420**

Comments: This Laboratory Grown Diamond was created by High Pressure High Temperature (HPHT) growth process. Indications of post-growth treatment.



Sample Image Used



August 23, 2025
 IGI Report Number **LG729516420**
 ROUND BRILLIANT
 LABORATORY GROWN DIAMOND
 4.76 - 4.79 X 2.98 MM
 Carat Weight **0.41 CARAT**
 Color Grade **FANCY VIVID PINK**
 Clarity Grade **VVS 2**
 Cut Grade **IDEAL**
 Polish **EXCELLENT**
 Symmetry **EXCELLENT**
 Fluorescence **STRONG**
 Inscription(s) **IGI LG729516420**

Comments: This Laboratory Grown Diamond was created by High Pressure High Temperature (HPHT) growth process. Indications of post-growth treatment.



August 23, 2025
 IGI Report Number **LG729516420**
 ROUND BRILLIANT
 LABORATORY GROWN DIAMOND
 4.76 - 4.79 X 2.98 MM
 Carat Weight **0.41 CARAT**
 Color Grade **FANCY VIVID PINK**
 Clarity Grade **VVS 2**
 Cut Grade **IDEAL**
 Polish **EXCELLENT**
 Symmetry **EXCELLENT**
 Fluorescence **STRONG**
 Inscription(s) **IGI LG729516420**

Comments: This Laboratory Grown Diamond was created by High Pressure High Temperature (HPHT) growth process. Indications of post-growth treatment.



THIS DOCUMENT WAS PRODUCED WITH THE FOLLOWING SECURITY MEASURES: SPECIAL DOCUMENT PAPER, INK SCREENS, WATERMARK, BACKGROUND DESIGNS, HOLOGRAM AND OTHER SECURITY FEATURES NOT LISTED AND DO EXCEED DOCUMENT SECURITY INDUSTRY GUIDELINES.