



ELECTRONIC COPY

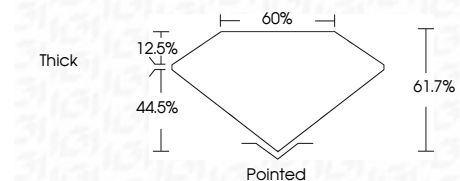
LG729515699
Report verification at igi.org



August 27, 2025
IGI Report Number **LG729515699**
Description **LABORATORY GROWN DIAMOND**
Shape and Cutting Style **LOZENGE STEP CUT**
Measurements **14.07 X 8.06 X 4.97 MM**

GRADING RESULTS

Carat Weight **2.52 CARATS**
Color Grade **G**
Clarity Grade **VVS 2**



ADDITIONAL GRADING INFORMATION

Polish **EXCELLENT**
Symmetry **EXCELLENT**
Fluorescence **NONE**
Inscription(s) **(IGI) LG729515699**
Comments: This Laboratory Grown Diamond was created by Chemical Vapor Deposition (CVD) growth process. Type IIa



August 27, 2025
IGI Report No LG729515699
LOZENGE STEP CUT
14.07 X 8.06 X 4.97 MM
2.52 CARATS
G
VVS 2
61.7%
60%
Thick
Pointed
EXCELLENT
EXCELLENT
NONE
(IGI) LG729515699
Comments: This Laboratory Grown Diamond was created by Chemical Vapor Deposition (CVD) growth process. Type IIa

LABORATORY GROWN DIAMOND REPORT

August 27, 2025
IGI Report Number **LG729515699**
Description **LABORATORY GROWN DIAMOND**
Shape and Cutting Style **LOZENGE STEP CUT**
Measurements **14.07 X 8.06 X 4.97 MM**

GRADING RESULTS

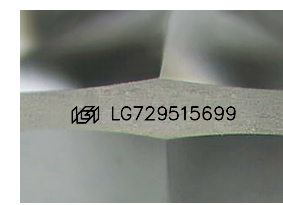
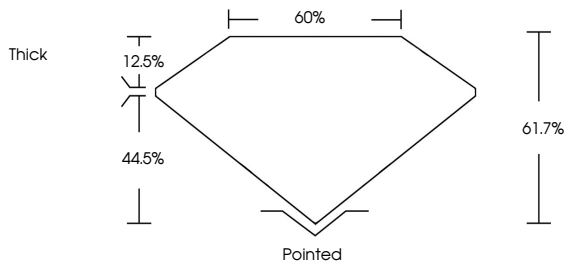
Carat Weight **2.52 CARATS**
Color Grade **G**
Clarity Grade **VVS 2**

ADDITIONAL GRADING INFORMATION

Polish **EXCELLENT**
Symmetry **EXCELLENT**
Fluorescence **NONE**
Inscription(s) **(IGI) LG729515699**

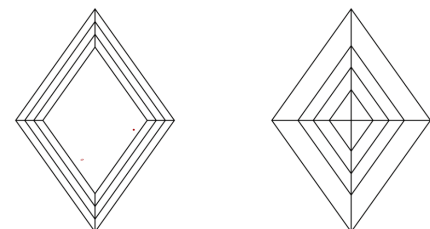
Comments: This Laboratory Grown Diamond was created by Chemical Vapor Deposition (CVD) growth process. Type IIa

PROPORTIONS



Sample Image Used

CLARITY CHARACTERISTICS



KEY TO SYMBOLS

Red symbols indicate internal characteristics.
Green symbols indicate external characteristics.

COLOR

| | | | | | | | | | |
|---|---|---|---|---|---|---|-------|------------|-------|
| D | E | F | G | H | I | J | Faint | Very Light | Light |
|---|---|---|---|---|---|---|-------|------------|-------|

CLARITY

| | | | | |
|---------------------|-----------------------------|------------------------|-------------------|------------------|
| IF | WS ¹⁻² | VS ¹⁻² | SI ¹⁻² | I ¹⁻³ |
| Internally Flawless | Very Very Slightly Included | Very Slightly Included | Slightly Included | Included |

