



**ELECTRONIC COPY**

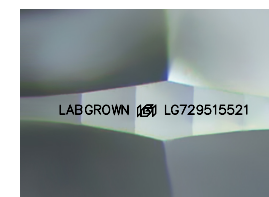
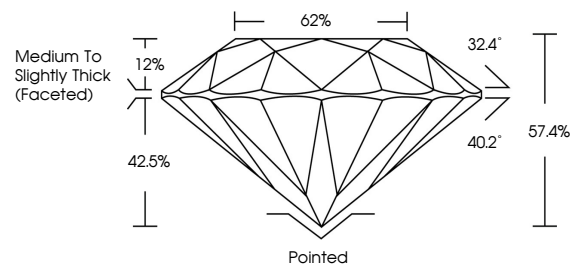
LG729515521  
Report verification at [igi.org](http://igi.org)



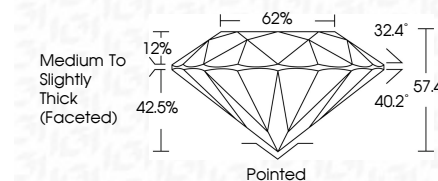
August 25, 2025  
IGI Report Number **LG729515521**  
Description **LABORATORY GROWN DIAMOND**  
Shape and Cutting Style **ROUND BRILLIANT**  
Measurements **13.46 - 13.52 X 7.73 MM**  
**GRADING RESULTS**  
Carat Weight **8.59 CARATS**  
Color Grade **FANCY INTENSE PINK**  
Clarity Grade **VS 1**  
Cut Grade **EXCELLENT**

August 25, 2025  
IGI Report Number **LG729515521**  
Description **LABORATORY GROWN DIAMOND**  
Shape and Cutting Style **ROUND BRILLIANT**  
Measurements **13.46 - 13.52 X 7.73 MM**  
**GRADING RESULTS**  
Carat Weight **8.59 CARATS**  
Color Grade **FANCY INTENSE PINK**  
Clarity Grade **VS 1**  
Cut Grade **EXCELLENT**

**PROPORTIONS**



Sample Image Used



**ADDITIONAL GRADING INFORMATION**  
Polish **EXCELLENT**  
Symmetry **EXCELLENT**  
Fluorescence **STRONG**  
Inscription(s) **LABGROWN (IGI) LG729515521**

Comments: This Laboratory Grown Diamond was created by Chemical Vapor Deposition (CVD) growth process. Indications of post-growth treatment.

**COLOR**

D E F G H I J Faint Very Light Light

**CLARITY**

IF	VS <sup>1-2</sup>	VS <sup>1-2</sup>	SI <sup>1-2</sup>	I <sup>1-3</sup>
Internally Flawless	Very Very Slightly Included	Very Slightly Included	Slightly Included	Included

**ADDITIONAL GRADING INFORMATION**

Polish **EXCELLENT**  
Symmetry **EXCELLENT**  
Fluorescence **STRONG**  
Inscription(s) **LABGROWN (IGI) LG729515521**  
Comments: This Laboratory Grown Diamond was created by Chemical Vapor Deposition (CVD) growth process. Indications of post-growth treatment.



**IGI**



August 25, 2025  
IGI Report No LG729515521  
**ROUND BRILLIANT**  
13.46 - 13.52 X 7.73 MM  
8.59 CARATS  
FANCY INTENSE PINK  
VS 1  
EXCELLENT  
62%  
57.4%  
Medium To Slightly Thick (Faceted)  
Pointed  
EXCELLENT  
EXCELLENT  
STRONG  
LABGROWN (IGI) LG729515521  
Comments: This Laboratory Grown Diamond was created by Chemical Vapor Deposition (CVD) growth process. Indications of post-growth treatment.