

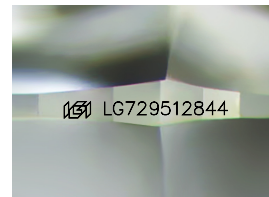
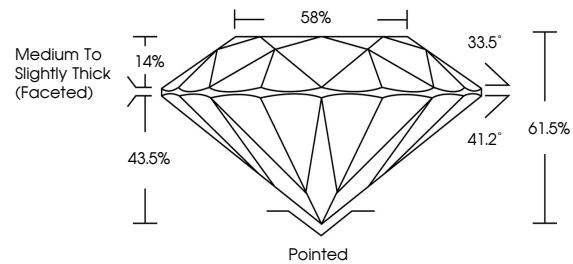


**INTERNATIONAL  
GEMOLOGICAL  
INSTITUTE**

**ELECTRONIC COPY**

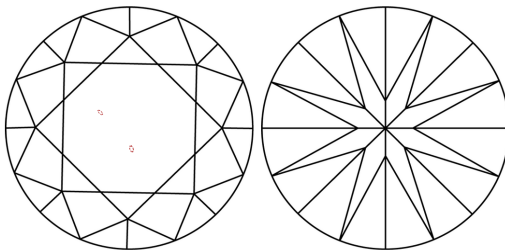
LG729512844  
Report verification at [igi.org](https://igi.org)

## PROPORTIONS



Sample Image Used

## CLARITY CHARACTERISTICS



## KEY TO SYMBOLS

Red symbols indicate internal characteristics.  
Green symbols indicate external characteristics.

## COLOR

D E F G H I J      Faint      Very Light      Light

## CLARITY

IF      WS<sup>1-2</sup>      VS<sup>1-2</sup>      SI<sup>1-2</sup>      |<sup>1-3</sup>

Internally Flawless	Very Very Slightly Included	Very Slightly Included	Slightly Included	Included
------------------------	--------------------------------	---------------------------	----------------------	----------



August 26, 2025

IGI Report Number **LG729512844**

Description	LABORATORY GROWN DIAMOND
-------------	--------------------------

Shape and Cutting Style **ROUND BRILLIANT**

Measurements **6.44 - 6.48 X 3.97 MM**

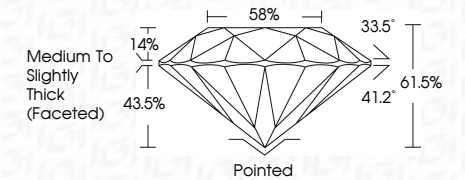
## GRADING RESULTS

Carat Weight 1.02 CARAT

Color Grade **F**

Clarity Grade **VS 1**

Cut Grade **IDEAL**



### ADDITIONAL GRADING INFORMATION

Polish **EXCELLENT**Symmetry **EXCELLENT**Fluorescence **NONE**Inscription(s)  LG729512844

Comments: This Laboratory Grown Diamond was created by Chemical Vapor Deposition (CVD) growth process.  
Type IIa



IGI



© IGI 2020, International Gemological Institute

FD - 10 20

**www.igi.org**

THIS DOCUMENT WAS PRODUCED WITH THE FOLLOWING SECURITY MEASURES: SPECIAL DOCUMENT PAPER, INK SCREENS, WATERMARK, BACKGROUND DESIGNS, HOLOGRAM AND OTHER SECURITY FEATURES NOT LISTED AND DO EXCEED DOCUMENT SECURITY INDUSTRY GUIDELINES

August 26, 2025	IGI Report No. I6729512844	1.02 CARAT F	
ROUND BRILLIANT			
6.44 - 6.48 X 3.97 MM			
Carat Weight	Color Grade	VS 1	
Clarity Grade	Cut Grade	IDEAL	
Depth	Table	61.5%	
Girdle		59%	
		Medium to Slightly Thick (Faceted)	
Culet	Polish	Painted	
Symmetry	Fluorescence	EXCELLENT	
Inscription(s)		EXCELLENT	
		NONE	
		I6716729512844	
Comments:			
This Laboratory Grown Diamond was created by Chemical Vapor Deposition (CVD) growth process.			
Type IIa			