



**ELECTRONIC COPY**

## LABORATORY GROWN DIAMOND REPORT

August 25, 2025	
IGI Report Number	LG729510669
Description	LABORATORY GROWN DIAMOND
Shape and Cutting Style	PRINCESS CUT
Measurements	8.90 X 8.90 X 6.10 MM
GRADING RESULTS	
Carat Weight	4.01 CARATS
Color Grade	F
Clarity Grade	VS 1

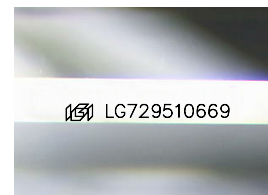
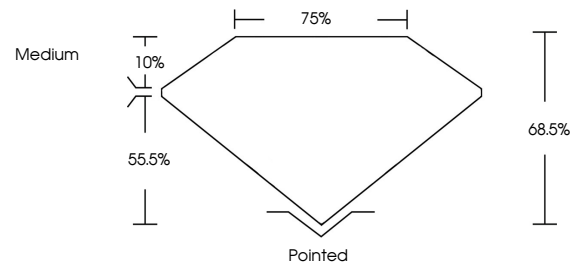
### ADDITIONAL GRADING INFORMATION

Polish	EXCELLENT
Symmetry	EXCELLENT
Fluorescence	NONE
Inscription(s)	 LG729510669

Comments: This Laboratory Grown Diamond was created by Chemical Vapor Deposition (CVD) growth process.  
Type IIa

LG729510669  
Report verification at [igi.org](https://igi.org)

## PROPORTIONS



Sample Image Used

## COLOR

D E F G H I J Faint Very Light Light

## CLARITY

IF	VS <sup>1-2</sup>	VS <sup>1-2</sup>	SI <sup>1-2</sup>	I <sup>1-3</sup>
Internally Flawless	Very Very Slightly Included	Very Slightly Included	Slightly Included	Included

## LABORATORY GROWN DIAMOND REPORT



August 25, 2025	
IGI Report Number	LG729510669
Description	LABORATORY GROWN DIAMOND
Shape and Cutting Style	PRINCESS CUT
Measurements	8.90 X 8.90 X 6.10 MM
<b>GRADING RESULTS</b>	
Carat Weight	4.01 CARATS
Color Grade	F
Clarity Grade	VS 1

### ADDITIONAL GRADING INFORMATION

Polish	EXCELLENT
Symmetry	EXCELLENT
Fluorescence	NONE
Inscription(s)	 LG729510669
Comments: This Laboratory Grown Diamond was created by Chemical Vapor Deposition (CVD) growth process.	
Type IIa	



© IGI 2020, International Gemological Institute

FD - 10 20



THIS DOCUMENT WAS PRODUCED WITH THE FOLLOWING SECURITY MEASURES: SPECIAL DOCUMENT PAPER, INK SCREENS, WATERMARK, BACKGROUND DESIGNS, HOLOGRAM AND OTHER SECURITY FEATURES NOT LISTED AND DO EXCEED DOCUMENT SECURITY INDUSTRY GUIDELINES

**www.igi.org**

August 25, 2025  
GI Report No LG729510669

(GI) Report No. L1

8 00 Y 8 00 Y 6 10 MM

3.90 X 8.90 X 6.10 MM  
401 CARATS

Carat Weight	4.01 CARATS
Color Grade	F

Color Grade

Clarity Grade	VS 1
VS 1	

Depth	68.5%
Table	75%

	75%	Medium
Table		
Girdle		

Grade	Medium
1	1
2	2
3	3
4	4
5	5
6	6
7	7
8	8
9	9
10	10
11	11
12	12

Cult	Dated
------	-------

Culet	Pointed
Polish	EXCELLENT

Polish

Symmetry

Fluorescence	EXCELLENT
Fluorescence	NONE

Inscription(s) 151 LG729510669

Comments:

**Comments:**  
This Laboratory Grown Diamond was created by Chemical Vapor Deposition

created by Chemical Vapor Deposition (CVD) growth process.

Type IIa