



ELECTRONIC COPY

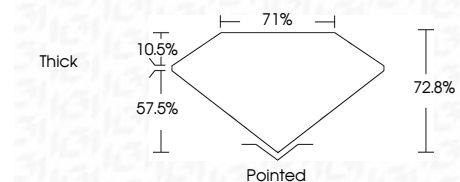
LG729506789
Report verification at igi.org



August 21, 2025
IGI Report Number **LG729506789**
Description **LABORATORY GROWN DIAMOND**
Shape and Cutting Style **PRINCESS CUT**
Measurements **8.75 X 8.64 X 6.29 MM**

GRADING RESULTS

Carat Weight **4.17 CARATS**
Color Grade **F**
Clarity Grade **VVS 2**



ADDITIONAL GRADING INFORMATION

Polish **EXCELLENT**
Symmetry **EXCELLENT**
Fluorescence **NONE**
Inscription(s) **IGI LG729506789**
Comments: This Laboratory Grown Diamond was created by Chemical Vapor Deposition (CVD) growth process.
Type IIa



August 21, 2025
IGI Report No LG729506789
PRINCESS CUT
4.17 CARATS
Carat Weight **F**
Color Grade **VVS 2**
Clarity Grade **72.8%**
Depth **71%**
Table **Thick**
Girdle
Culet
Polish **Pointed**
Symmetry **EXCELLENT**
Fluorescence **EXCELLENT**
Inscription(s) **NONE**
IGI LG729506789

Comments: This Laboratory Grown Diamond was created by Chemical Vapor Deposition (CVD) growth process.
Type IIa

LABORATORY GROWN DIAMOND REPORT

August 21, 2025
IGI Report Number **LG729506789**
Description **LABORATORY GROWN DIAMOND**
Shape and Cutting Style **PRINCESS CUT**
Measurements **8.75 X 8.64 X 6.29 MM**

GRADING RESULTS

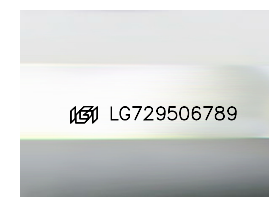
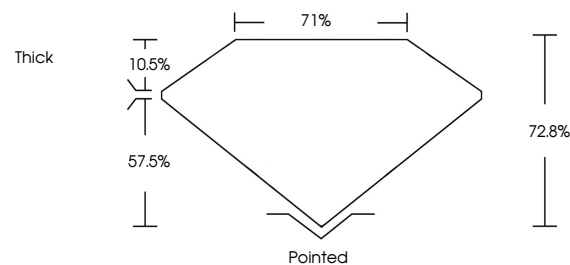
Carat Weight **4.17 CARATS**
Color Grade **F**
Clarity Grade **VVS 2**

ADDITIONAL GRADING INFORMATION

Polish **EXCELLENT**
Symmetry **EXCELLENT**
Fluorescence **NONE**
Inscription(s) **IGI LG729506789**

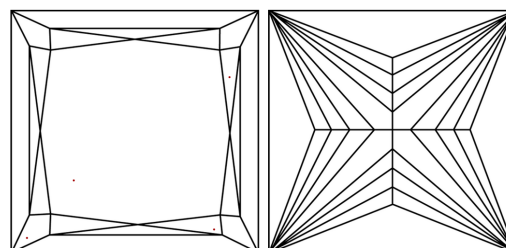
Comments: This Laboratory Grown Diamond was created by Chemical Vapor Deposition (CVD) growth process.
Type IIa

PROPORTIONS



Sample Image Used

CLARITY CHARACTERISTICS



KEY TO SYMBOLS

Red symbols indicate internal characteristics.
Green symbols indicate external characteristics.

COLOR

D E F G H I J Faint Very Light Light

CLARITY

IF WS¹⁻² VS¹⁻² SI¹⁻² I¹⁻³

Internally Flawless Very Very Slightly Included Very Slightly Included Slightly Included Included

