



ELECTRONIC COPY

LG729505757
Report verification at igi.org



August 23, 2025
IGI Report Number **LG729505757**
Description **LABORATORY GROWN DIAMOND**

Shape and Cutting Style **SQUARE EMERALD CUT**
Measurements **13.22 X 12.90 X 8.64 MM**

GRADING RESULTS
Carat Weight **15.02 CARATS**
Color Grade **FANCY VIVID GREEN**
Clarity Grade **VS 1**

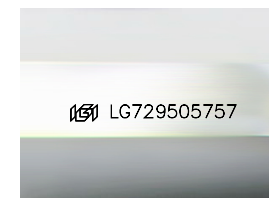
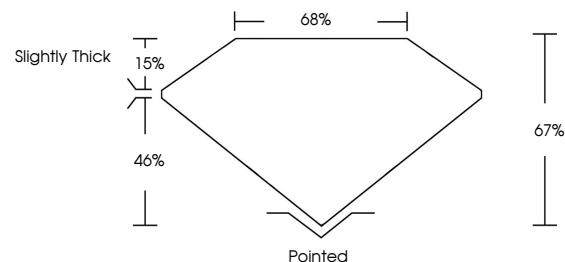
August 23, 2025
IGI Report Number **LG729505757**
Description **LABORATORY GROWN DIAMOND**
Shape and Cutting Style **SQUARE EMERALD CUT**
Measurements **13.22 X 12.90 X 8.64 MM**

GRADING RESULTS
Carat Weight **15.02 CARATS**
Color Grade **FANCY VIVID GREEN**
Clarity Grade **VS 1**

ADDITIONAL GRADING INFORMATION
Polish **EXCELLENT**
Symmetry **EXCELLENT**
Fluorescence **NONE**
Inscription(s) **IGI LG729505757**

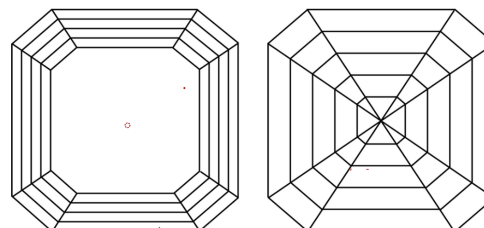
Comments: This Laboratory Grown Diamond was created by Chemical Vapor Deposition (CVD) growth process.
Indications of post-growth treatment.

PROPORTIONS



Sample Image Used

CLARITY CHARACTERISTICS



KEY TO SYMBOLS

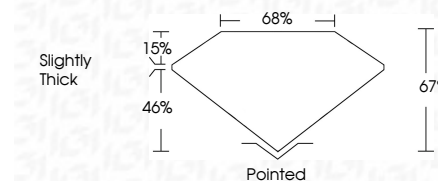
Red symbols indicate internal characteristics.
Green symbols indicate external characteristics.

COLOR

D E F G H I J Faint Very Light Light

CLARITY

IF	VS ¹⁻²	VS ¹⁻²	SI ¹⁻²	I ¹⁻³
Internally Flawless	Very Very Slightly Included	Very Slightly Included	Slightly Included	Included



ADDITIONAL GRADING INFORMATION

Polish **EXCELLENT**
Symmetry **EXCELLENT**
Fluorescence **NONE**
Inscription(s) **IGI LG729505757**
Comments: This Laboratory Grown Diamond was created by Chemical Vapor Deposition (CVD) growth process.
Indications of post-growth treatment.



August 23, 2025
IGI Report No LG729505757
SQUARE EMERALD CUT
15.02 CARATS
FANCY VIVID GREEN
VS 1
13.22 X 12.90 X 8.64 MM
Color Grade
Clarity Grade
Table
Depth
Girdle
Slightly Thick
Pointed
Culet
Polish
Symmetry
Fluorescence
Inscription(s)
EXCELLENT
EXCELLENT
NONE
IGI LG729505757
Comments: This Laboratory Grown Diamond was created by Chemical Vapor Deposition (CVD) growth process.
Indications of post-growth treatment.