



**ELECTRONIC COPY**

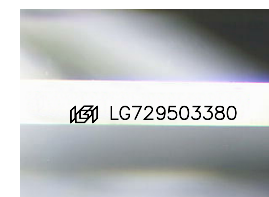
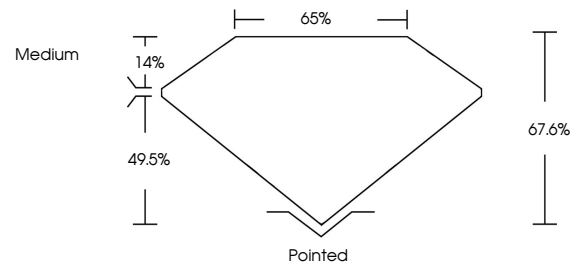
LG729503380  
Report verification at igi.org



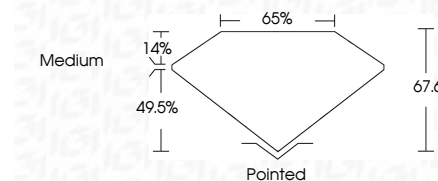
August 26, 2025  
IGI Report Number **LG729503380**  
Description **LABORATORY GROWN DIAMOND**  
Shape and Cutting Style **CUT CORNERED  
RECTANGULAR MODIFIED  
BRILLIANT**  
Measurements **8.52 X 5.81 X 3.93 MM**  
**GRADING RESULTS**  
Carat Weight **1.72 CARAT**  
Color Grade **F**  
Clarity Grade **INTERNALLY FLAWLESS**

August 26, 2025  
IGI Report Number **LG729503380**  
Description **LABORATORY GROWN DIAMOND**  
Shape and Cutting Style **CUT CORNERED RECTANGULAR  
MODIFIED BRILLIANT**  
Measurements **8.52 X 5.81 X 3.93 MM**  
**GRADING RESULTS**  
Carat Weight **1.72 CARAT**  
Color Grade **F**  
Clarity Grade **INTERNALLY FLAWLESS**

**PROPORTIONS**



Sample Image Used



**ADDITIONAL GRADING INFORMATION**

Polish **EXCELLENT**  
Symmetry **EXCELLENT**  
Fluorescence **NONE**  
Inscription(s) **IGI LG729503380**

Comments: This Laboratory Grown Diamond was created by Chemical Vapor Deposition (CVD) growth process. Type IIa

**COLOR**

D E F G H I J Faint Very Light Light

**CLARITY**

IF	VS <sup>1-2</sup>	VS <sup>1-2</sup>	SI <sup>1-2</sup>	I <sup>1-3</sup>
Internally Flawless	Very Very Slightly Included	Very Slightly Included	Slightly Included	Included

**ADDITIONAL GRADING INFORMATION**

Polish **EXCELLENT**  
Symmetry **EXCELLENT**  
Fluorescence **NONE**  
Inscription(s) **IGI LG729503380**  
Comments: This Laboratory Grown Diamond was created by Chemical Vapor Deposition (CVD) growth process. Type IIa



August 26, 2025  
IGI Report No **LG729503380**  
**CUT CORNERED RECT. MODIFIED BRILLIANT**  
**8.52 X 5.81 X 3.93 MM**  
Carat Weight **1.72 CARAT**  
Color Grade **F**  
Clarity Grade **IF**  
Depth **67.6%**  
Table **65%**  
Girdle **Medium**  
Culet **Pointed**  
Polish **EXCELLENT**  
Symmetry **EXCELLENT**  
Fluorescence **NONE**  
Inscription(s) **IGI LG729503380**

Comments: This Laboratory Grown Diamond was created by Chemical Vapor Deposition (CVD) growth process. Type IIa