

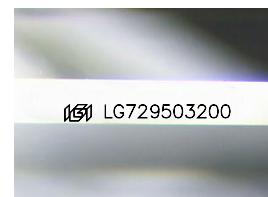
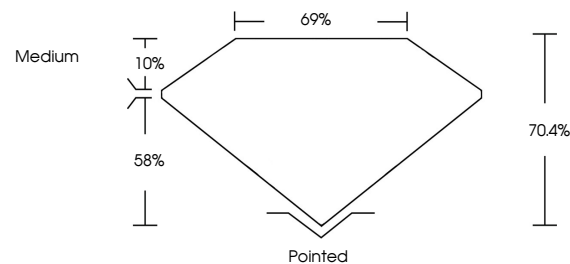


**ELECTRONIC COPY**

## LABORATORY GROWN DIAMOND REPORT

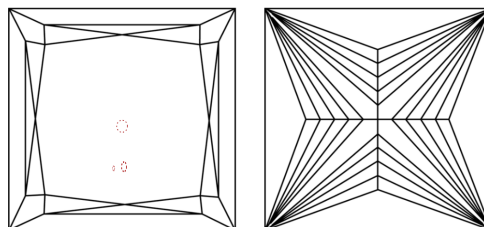
LG729503200  
Report verification at [igi.org](https://igi.org)

## PROPORTIONS



Sample Image Used

## CLARITY CHARACTERISTICS



## KEY TO SYMBOLS

Red symbols indicate internal characteristics.  
Green symbols indicate external characteristics.

## COLOR

D E F G H I J Faint Very Light Light

## CLARITY

IF      VWS<sup>1-2</sup>      VS<sup>1-2</sup>      SI<sup>1-2</sup>      I<sup>1-3</sup>

|                        |                                |                           |                      |          |
|------------------------|--------------------------------|---------------------------|----------------------|----------|
| Internally<br>Flawless | Very Very<br>Slightly Included | Very<br>Slightly Included | Slightly<br>Included | Included |
|------------------------|--------------------------------|---------------------------|----------------------|----------|

## LABORATORY GROWN DIAMOND REPORT



August 20, 2025

IGI Report Number **LG729503200**Description **LABORATORY GROWN DIAMOND**Shape and Cutting Style **PRINCESS CUT**

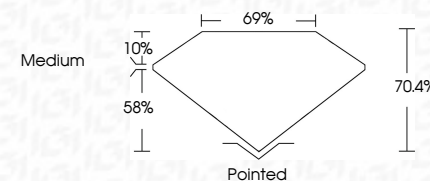
Measurements **7.01 X 6.79 X 4.78 MM**

## GRADING RESULTS

Carat Weight **2.01 CARATS**

Color Grade **FANCY VIVID GREEN**

Clarity Grade VS 2



### ADDITIONAL GRADING INFORMATION

Polish EXCELLENT

Symmetry **EXCELLENT**Fluorescence **NONE**Inscription(s)  LG729503200

Comments: This Laboratory Grown Diamond was created by Chemical Vapor Deposition (CVD) growth process.

Indications of post-growth treatment.



© IGI 2020, International Gemological Institute

FD - 10 20

**www.igi.org**

THIS DOCUMENT WAS PRODUCED WITH THE FOLLOWING SECURITY MEASURES: SPECIAL DOCUMENT PAPER, INK SCREENS, WATERMARK BACKGROUND DESIGNS, HOLOGRAM AND OTHER SECURITY FEATURES NOT LISTED AND DO EXCEED DOCUMENT SECURITY INDUSTRY GUIDELINES

August 20, 2025  
GI Report No LG729503200  
PRINCESS CLIT

|                          |               |                         |
|--------------------------|---------------|-------------------------|
| <b>201 CARATS</b>        | <b>VS 2</b>   | <b>Pointed</b>          |
| <b>FANCY VIVID GREEN</b> | <b>70-6%</b>  | <b>EXCELLENT</b>        |
|                          | <b>69%</b>    | <b>EXCELLENT</b>        |
|                          | <b>Medium</b> | <b>NONE</b>             |
|                          |               | <b>4811 (7/29/2021)</b> |

**Comments:**  
This Laboratory Grown Diamond was created by Chemical Vapor Deposition (CVD) growth process.  
millions of post-growth treatment