



ELECTRONIC COPY

LABORATORY GROWN DIAMOND REPORT

August 22, 2025  
IGI Report Number LG728581510  
Description LABORATORY GROWN DIAMOND  
Shape and Cutting Style CUT CORNERED RECTANGULAR MODIFIED BRILLIANT  
Measurements 12.44 X 8.57 X 5.58 MM

GRADING RESULTS

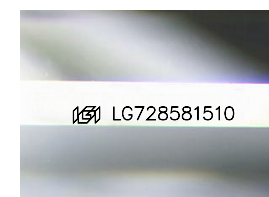
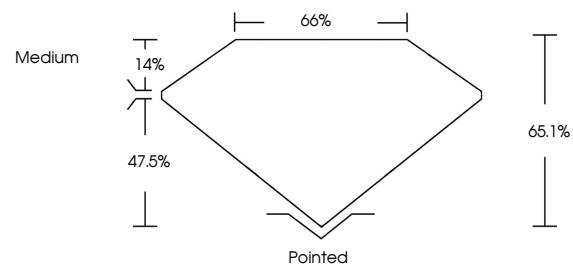
Carat Weight 5.13 CARATS  
Color Grade H  
Clarity Grade VS 1

ADDITIONAL GRADING INFORMATION

Polish EXCELLENT  
Symmetry EXCELLENT  
Fluorescence NONE  
Inscription(s) LG728581510

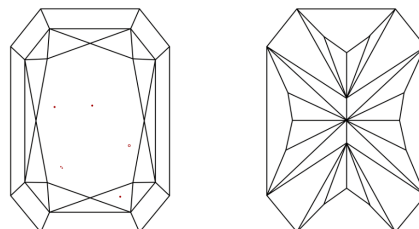
Comments: This Laboratory Grown Diamond was created by Chemical Vapor Deposition (CVD) growth process.  
Type IIa

PROPORTIONS



Sample Image Used

CLARITY CHARACTERISTICS



KEY TO SYMBOLS

Red symbols indicate internal characteristics.  
Green symbols indicate external characteristics.

COLOR

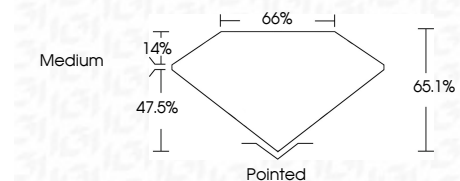
D E F G H I J Faint Very Light Light

CLARITY

IF WS<sup>1-2</sup> VS<sup>1-2</sup> SI<sup>1-2</sup> I<sup>1-3</sup>  
Internally Flawless Very Very Slightly Included Very Slightly Included Slightly Included Included



August 22, 2025  
IGI Report Number LG728581510  
Description LABORATORY GROWN DIAMOND  
Shape and Cutting Style CUT CORNERED RECTANGULAR MODIFIED BRILLIANT  
Measurements 12.44 X 8.57 X 5.58 MM  
GRADING RESULTS  
Carat Weight 5.13 CARATS  
Color Grade H  
Clarity Grade VS 1



ADDITIONAL GRADING INFORMATION

Polish EXCELLENT  
Symmetry EXCELLENT  
Fluorescence NONE  
Inscription(s) LG728581510  
Comments: This Laboratory Grown Diamond was created by Chemical Vapor Deposition (CVD) growth process.  
Type IIa



August 22, 2025  
IGI Report No LG728581510  
CUT CORNERED RECT. MODIFIED BRILLIANT  
12.44 X 8.57 X 5.58 MM  
Carat Weight 5.13 CARATS  
Color Grade H  
Clarity Grade VS 1  
Depth 65.1%  
Table 47.5%  
Girdle Medium  
Culet Pointed  
Polish EXCELLENT  
Symmetry EXCELLENT  
Fluorescence NONE  
Inscription(s) LG728581510  
Comments: This Laboratory Grown Diamond was created by Chemical Vapor Deposition (CVD) growth process.  
Type IIa