



ELECTRONIC COPY

LG728580330
Report verification at igi.org



August 23, 2025
IGI Report Number **LG728580330**
Description **LABORATORY GROWN DIAMOND**
Shape and Cutting Style **SQUARE EMERALD CUT**
Measurements **5.80 X 5.78 X 3.52 MM**
GRADING RESULTS
Carat Weight **1.14 CARAT**
Color Grade **FANCY INTENSE BLUE**
Clarity Grade **INTERNALLY FLAWLESS**

August 23, 2025
IGI Report Number **LG728580330**
Description **LABORATORY GROWN DIAMOND**
Shape and Cutting Style **SQUARE EMERALD CUT**
Measurements **5.80 X 5.78 X 3.52 MM**

GRADING RESULTS

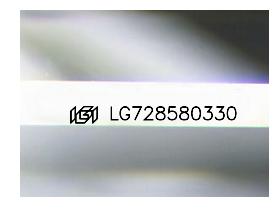
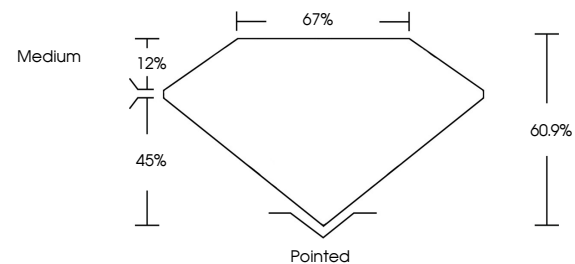
Carat Weight **1.14 CARAT**
Color Grade **FANCY INTENSE BLUE**
Clarity Grade **INTERNALLY FLAWLESS**

ADDITIONAL GRADING INFORMATION

Polish **EXCELLENT**
Symmetry **EXCELLENT**
Fluorescence **NONE**
Inscription(s) **IGI LG728580330**

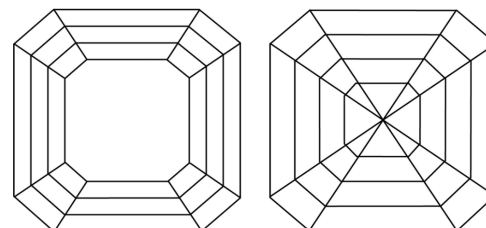
Comments: This Laboratory Grown Diamond was created by High Pressure High Temperature (HPHT) growth process. Indications of post-growth treatment.

PROPORTIONS



Sample Image Used

CLARITY CHARACTERISTICS



KEY TO SYMBOLS

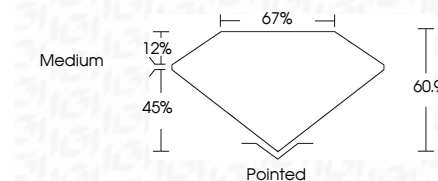
Red symbols indicate internal characteristics.
Green symbols indicate external characteristics.

COLOR

D E F G H I J Faint Very Light Light

CLARITY

IF	VS ¹⁻²	VS ¹⁻²	SI ¹⁻²	I ¹⁻³
Internally Flawless	Very Very Slightly Included	Very Slightly Included	Slightly Included	Included



ADDITIONAL GRADING INFORMATION

Polish **EXCELLENT**
Symmetry **EXCELLENT**
Fluorescence **NONE**
Inscription(s) **IGI LG728580330**
Comments: This Laboratory Grown Diamond was created by High Pressure High Temperature (HPHT) growth process. Indications of post-growth treatment.



August 23, 2025
IGI Report No LG728580330
SQUARE EMERALD CUT
1.14 CARAT
Carat Weight
Color Grade **FANCY INTENSE BLUE**
Clarity Grade **IF**
Depth **60.9%**
Table **67%**
Girdle **Medium**
Culet **Pointed**
Polish **EXCELLENT**
Symmetry **EXCELLENT**
Fluorescence **NONE**
Inscription(s) **IGI LG728580330**
Comments: This Laboratory Grown Diamond was created by High Pressure High Temperature (HPHT) growth process. Indications of post-growth treatment.