



ELECTRONIC COPY

LG728580324
Report verification at igi.org



October 5, 2025
IGI Report Number **LG728580324**
Description **LABORATORY GROWN DIAMOND**
Shape and Cutting Style **SQUARE CUSHION MODIFIED BRILLIANT**

Measurements **6.69 X 6.50 X 4.22 MM**

GRADING RESULTS

Carat Weight **1.50 CARAT**
Color Grade **FANCY VIVID BLUE**
Clarity Grade **INTERNALLY FLAWLESS**

October 5, 2025
IGI Report Number **LG728580324**
Description **LABORATORY GROWN DIAMOND**
Shape and Cutting Style **SQUARE CUSHION MODIFIED BRILLIANT**
Measurements **6.69 X 6.50 X 4.22 MM**

GRADING RESULTS

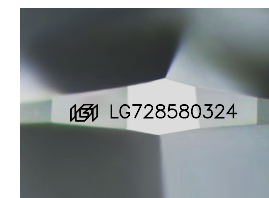
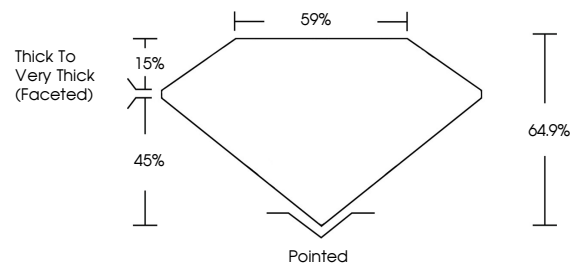
Carat Weight **1.50 CARAT**
Color Grade **FANCY VIVID BLUE**
Clarity Grade **INTERNALLY FLAWLESS**

ADDITIONAL GRADING INFORMATION

Polish **EXCELLENT**
Symmetry **EXCELLENT**
Fluorescence **NONE**
Inscription(s) **IGI LG728580324**

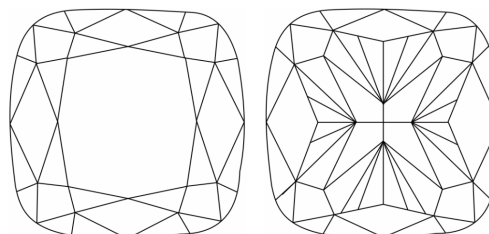
Comments: This Laboratory Grown Diamond was created by High Pressure High Temperature (HPHT) growth process. Indications of post-growth treatment.

PROPORTIONS



Sample Image Used

CLARITY CHARACTERISTICS



KEY TO SYMBOLS

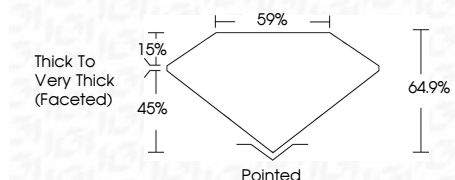
Red symbols indicate internal characteristics.
Green symbols indicate external characteristics.

COLOR

D E F G H I J Faint Very Light Light

CLARITY

FL	IF	VS ¹⁻²	VS ¹⁻²	SI ¹⁻²	I ¹⁻³
Flawless	Internally Flawless	Very Very Slightly Included	Very Slightly Included	Slightly Included	Included



ADDITIONAL GRADING INFORMATION

Polish **EXCELLENT**
Symmetry **EXCELLENT**
Fluorescence **NONE**
Inscription(s) **IGI LG728580324**
Comments: This Laboratory Grown Diamond was created by High Pressure High Temperature (HPHT) growth process. Indications of post-growth treatment.



October 5, 2025
IGI Report No **LG728580324**
SQUARE CUSHION MODIFIED BRILLIANT
6.69 X 6.50 X 4.22 MM
1.50 CARAT
FANCY VIVID BLUE
CLARITY Grade **IF**
64.9%
59%
Thick to Very Thick (Faceted)
Pointed
Polish **EXCELLENT**
Symmetry **EXCELLENT**
Fluorescence **NONE**
Inscription(s) **IGI LG728580324**
Comments: This Laboratory Grown Diamond was created by High Pressure High Temperature (HPHT) growth process. Indications of post-growth treatment.