

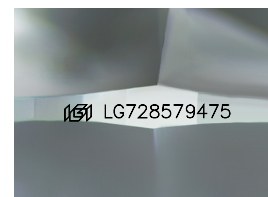
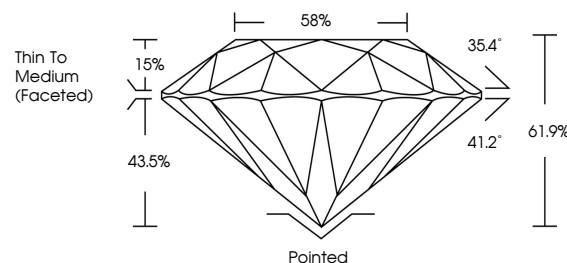


ELECTRONIC COPY

LABORATORY GROWN DIAMOND REPORT

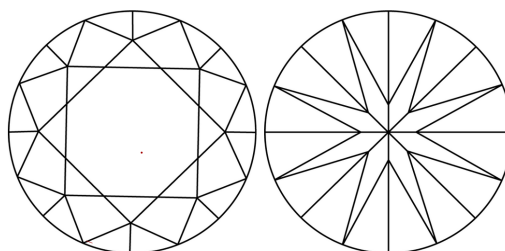
LG728579475
Report verification at igi.org

PROPORTIONS



Sample Image Used

CLARITY CHARACTERISTICS



KEY TO SYMBOLS

Red symbols indicate internal characteristics.
Green symbols indicate external characteristics.

COLOR

D E F G H I J Faint Very Light Light

CLARITY

IF WS¹⁻² VS¹⁻² SI¹⁻² |¹⁻³

Internally Flawless	Very Very Slightly Included	Very Slightly Included	Slightly Included	Included
------------------------	--------------------------------	---------------------------	----------------------	----------

LABORATORY GROWN DIAMOND REPORT



August 20, 2025

IGI Report Number **LG728579475**Description **LABORATORY GROWN DIAMOND**Shape and Cutting Style **ROUND BRILLIANT**

Measurements **9.31 - 9.35 X 5.77 MM**

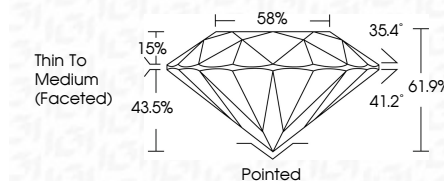
GRADING RESULTS

Carat Weight **3.09 CARATS**

Color Grade	E
-------------	---

Clarity Grade **VVS 1**

Cut Grade **IDEAL**



ADDITIONAL GRADING INFORMATION

Polish **EXCELLENT**Symmetry **EXCELLENT**Fluorescence NONIInscription(s) LG728579475

Comments: This Laboratory Grown Diamond was created by Chemical Vapor Deposition (CVD) growth process.
Type IIa



© IGI 2020, International Gemological Institute

FD - 10 20

www.igi.org

THIS DOCUMENT WAS PRODUCED WITH THE FOLLOWING SECURITY MEASURES: SPECIAL DOCUMENT PAPER, INK SCREENS, WATERMARK BACKGROUND DESIGNS, HOLOGRAM AND OTHER SECURITY FEATURES NOT LISTED AND DO EXCEED DOCUMENT SECURITY INDUSTRY GUIDELINES

August 20, 2025
GI Report No LG728579475
ROUND BRILLIANT

Carat Weight	3.01 - 9.35 X 5.77 MM
Color Grade	3.09 CARATS
Clarity Grade	VVS 1
Depth	IDEAL
Table	61.9%
Girdle	56%
Culet	Thin to Medium (faceted)
Polish	Pointed
Symmetry	EXCELLENT
Fluorescence	EXCELLENT
	NONE

Comments:
This Laboratory Grown Diamond was
created by Chemical Vapor Deposition
(CVD) growth process.