



November 12, 2025

IGI Report Number **LG728574694**

PEAR BRILLIANT

LABORATORY GROWN DIAMOND

5.92 X 3.74 X 2.23 MM

Carat Weight **0.28 CARAT**

Color Grade **D**

Clarity Grade **VS 1**

Polish **VERY GOOD**

Symmetry **VERY GOOD**

Fluorescence **NONE**

Inscription(s) **IGI LG728574694**

Comments: This Laboratory Grown Diamond was created by Chemical Vapor Deposition (CVD) growth process. Type IIa

LABORATORY GROWN DIAMOND REPORT

November 12, 2025

IGI Report Number **LG728574694**

Description **LABORATORY GROWN DIAMOND**

Shape and Cutting Style **PEAR BRILLIANT**

Measurements **5.92 X 3.74 X 2.23 MM**

GRADING RESULTS

Carat Weight **0.28 CARAT**

Color Grade **D**

Clarity Grade **VS 1**

ADDITIONAL GRADING INFORMATION

Polish **VERY GOOD**

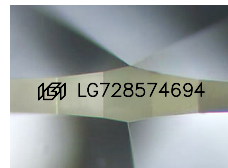
Symmetry **VERY GOOD**

Fluorescence **NONE**

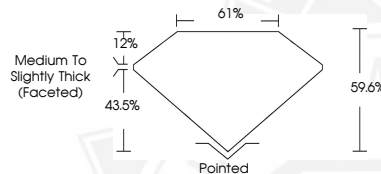
Inscription(s) **IGI LG728574694**

Comments: This Laboratory Grown Diamond was created by Chemical Vapor Deposition (CVD) growth process.

Type IIa



Sample Image Used



November 12, 2025

IGI Report Number **LG728574694**

PEAR BRILLIANT

LABORATORY GROWN DIAMOND

5.92 X 3.74 X 2.23 MM

Carat Weight **0.28 CARAT**

Color Grade **D**

Clarity Grade **VS 1**

Polish **VERY GOOD**

Symmetry **VERY GOOD**

Fluorescence **NONE**

Inscription(s) **IGI LG728574694**

Comments: This Laboratory Grown Diamond was created by Chemical Vapor Deposition (CVD) growth process. Type IIa



THIS DOCUMENT WAS PRODUCED WITH THE FOLLOWING SECURITY MEASURES: SPECIAL DOCUMENT PAPER, INK SCREENS, WATERMARK, BACKGROUND DESIGNS, HOLOGRAM AND OTHER SECURITY FEATURES NOT LISTED AND DO EXCEED DOCUMENT SECURITY INDUSTRY GUIDELINES.