



ELECTRONIC COPY

LG728574073
Report verification at igi.org



October 10, 2025
IGI Report Number **LG728574073**
Description **LABORATORY GROWN DIAMOND**
Shape and Cutting Style **CUT CORNERED
RECTANGULAR MODIFIED
BRILLIANT**
Measurements **12.55 X 8.52 X 5.10 MM**
GRADING RESULTS
Carat Weight **5.08 CARATS**
Color Grade **FANCY INTENSE ORANGY
YELLOW**
Clarity Grade **VS 2**

LABORATORY GROWN DIAMOND REPORT

October 10, 2025
IGI Report Number **LG728574073**
Description **LABORATORY GROWN DIAMOND**
Shape and Cutting Style **CUT CORNERED RECTANGULAR
MODIFIED BRILLIANT**
Measurements **12.55 X 8.52 X 5.10 MM**

GRADING RESULTS

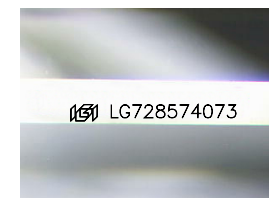
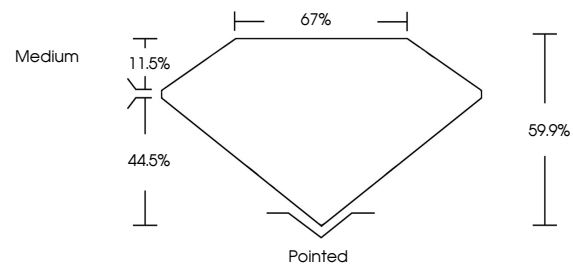
Carat Weight **5.08 CARATS**
Color Grade **FANCY INTENSE ORANGY
YELLOW**
Clarity Grade **VS 2**

ADDITIONAL GRADING INFORMATION

Polish **EXCELLENT**
Symmetry **EXCELLENT**
Fluorescence **NONE**
Inscription(s) **IGI LG728574073**

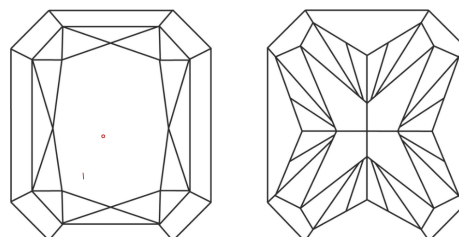
Comments: This Laboratory Grown Diamond was created by Chemical Vapor Deposition (CVD) growth process.

PROPORTIONS



Sample Image Used

CLARITY CHARACTERISTICS



KEY TO SYMBOLS

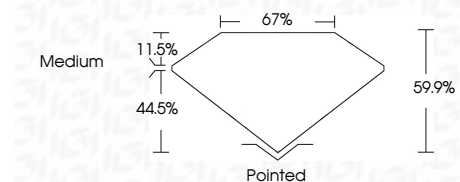
Red symbols indicate internal characteristics.
Green symbols indicate external characteristics.

COLOR

D E F G H I J Faint Very Light Light

CLARITY

FL	IF	VS ¹⁻²	VS ¹⁻²	SI ¹⁻²	I ¹⁻³
Flawless	Internally Flawless	Very Very Slightly Included	Very Slightly Included	Slightly Included	Included



ADDITIONAL GRADING INFORMATION

Polish **EXCELLENT**
Symmetry **EXCELLENT**
Fluorescence **NONE**
Inscription(s) **IGI LG728574073**
Comments: This Laboratory Grown Diamond was created by Chemical Vapor Deposition (CVD) growth process.



IGI



October 10, 2025
IGI Report No LG728574073
CUT CORNERED RECT. MODIFIED BRILLIANT
5.08 CARATS
Carat Weight
FANCY INTENSE ORANGY YELLOW
Color Grade
VS 2
Clarity Grade
12.55 X 8.52 X 5.10 MM
Depth
67%
Table
Medium
Pointed
EXCELLENT
EXCELLENT
NONE
IGI LG728574073
Inscription(s)
Comments: This Laboratory Grown Diamond was created by Chemical Vapor Deposition (CVD) growth process.