



ELECTRONIC COPY

LG728574021
Report verification at igi.org



September 5, 2025
IGI Report Number **LG728574021**
Description **LABORATORY GROWN DIAMOND**
Shape and Cutting Style **SQUARE CUSHION MODIFIED BRILLIANT**
Measurements **17.19 X 16.54 X 11.20 MM**
GRADING RESULTS
Carat Weight **31.53 CARATS**
Color Grade **FANCY VIVID GRAYISH YELLOW**
Clarity Grade **VS 1**

LABORATORY GROWN DIAMOND REPORT

September 5, 2025
IGI Report Number **LG728574021**
Description **LABORATORY GROWN DIAMOND**
Shape and Cutting Style **SQUARE CUSHION MODIFIED BRILLIANT**
Measurements **17.19 X 16.54 X 11.20 MM**

GRADING RESULTS

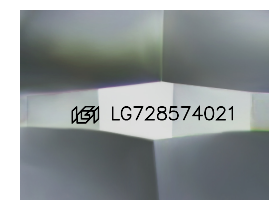
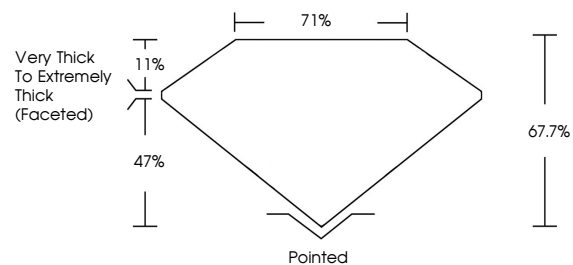
Carat Weight **31.53 CARATS**
Color Grade **FANCY VIVID GRAYISH YELLOW**
Clarity Grade **VS 1**

ADDITIONAL GRADING INFORMATION

Polish **EXCELLENT**
Symmetry **EXCELLENT**
Fluorescence **NONE**
Inscription(s) **IGI LG728574021**

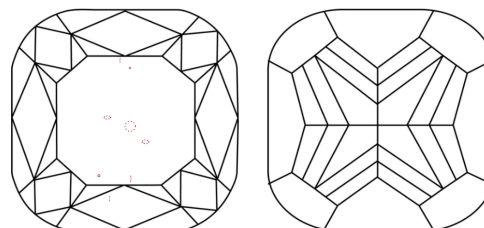
Comments: This Laboratory Grown Diamond was created by Chemical Vapor Deposition (CVD) growth process.

PROPORTIONS



Sample Image Used

CLARITY CHARACTERISTICS



KEY TO SYMBOLS

Red symbols indicate internal characteristics.
Green symbols indicate external characteristics.

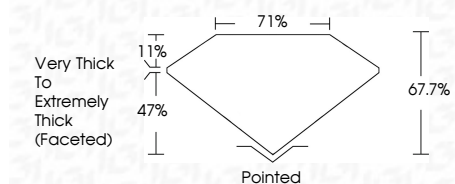
COLOR

D E F G H I J Faint Very Light Light

CLARITY

IF WS¹⁻² VS¹⁻² SI¹⁻² I¹⁻³

Internally Flawless Very Very Slightly Included Very Slightly Included Slightly Included Included



ADDITIONAL GRADING INFORMATION

Polish **EXCELLENT**
Symmetry **EXCELLENT**
Fluorescence **NONE**
Inscription(s) **IGI LG728574021**
Comments: This Laboratory Grown Diamond was created by Chemical Vapor Deposition (CVD) growth process.



IGI



September 5, 2025
IGI Report No LG728574021
SQUARE CUSHION MODIFIED BRILLIANT
17.19 X 16.54 X 11.20 MM
31.53 CARATS
Carat Weight
Color Grade **FANCY VIVID GRAYISH YELLOW**
Clarity Grade **VS 1**
Depth 67.7%
Table 71%
Girdle **Very Thick to Extremely Thick (Faceted)**
Culet Pointed
Polish **EXCELLENT**
Symmetry **EXCELLENT**
Fluorescence **NONE**
Inscription(s) **IGI LG728574021**
Comments: This Laboratory Grown Diamond was created by Chemical Vapor Deposition (CVD) growth process.