



ELECTRONIC COPY

LG728572104
Report verification at igi.org



August 23, 2025

IGI Report Number **LG728572104**

Description **LABORATORY GROWN DIAMOND**

Shape and Cutting Style **PRINCESS CUT**

Measurements **11.69 X 11.35 X 7.82 MM**

GRADING RESULTS

Carat Weight **9.09 CARATS**

Color Grade **F**

Clarity Grade **VS 1**

LABORATORY GROWN DIAMOND REPORT

August 23, 2025

IGI Report Number **LG728572104**

Description **LABORATORY GROWN DIAMOND**

Shape and Cutting Style **PRINCESS CUT**

Measurements **11.69 X 11.35 X 7.82 MM**

GRADING RESULTS

Carat Weight **9.09 CARATS**

Color Grade **F**

Clarity Grade **VS 1**

ADDITIONAL GRADING INFORMATION

Polish **EXCELLENT**

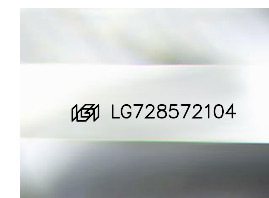
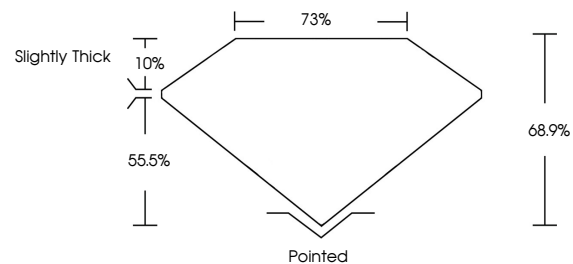
Symmetry **EXCELLENT**

Fluorescence **NONE**

Inscription(s) **IGI LG728572104**

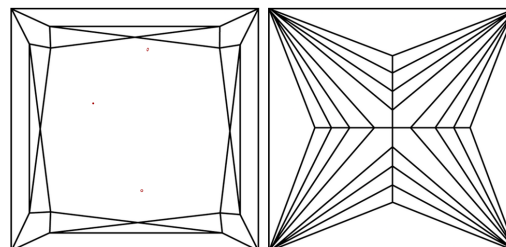
Comments: This Laboratory Grown Diamond was created by Chemical Vapor Deposition (CVD) growth process. Type IIa

PROPORTIONS



Sample Image Used

CLARITY CHARACTERISTICS



KEY TO SYMBOLS

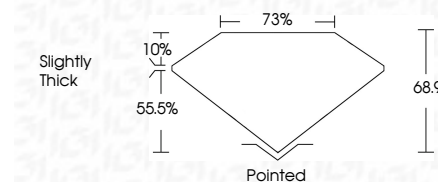
Red symbols indicate internal characteristics.
Green symbols indicate external characteristics.

COLOR

D E F G H I J Faint Very Light Light

CLARITY

IF	VS ¹⁻²	VS ¹⁻²	SI ¹⁻²	I ¹⁻³
Internally Flawless	Very Very Slightly Included	Very Slightly Included	Slightly Included	Included



ADDITIONAL GRADING INFORMATION

Polish **EXCELLENT**

Symmetry **EXCELLENT**

Fluorescence **NONE**

Inscription(s) **IGI LG728572104**

Comments: This Laboratory Grown Diamond was created by Chemical Vapor Deposition (CVD) growth process. Type IIa



IGI



August 23, 2025
IGI Report No LG728572104
PRINCESS CUT

9.09 CARATS
F

11.69 X 11.35 X 7.82 MM
Color Grade VS 1
Depth 68.9%
Table 73%
Girdle Slightly Thick

Culet Pointed
Polish EXCELLENT
Symmetry EXCELLENT
Fluorescence NONE
Inscription(s) IGI LG728572104

Comments: This Laboratory Grown Diamond was created by Chemical Vapor Deposition (CVD) growth process. Type IIa