



ELECTRONIC COPY

LG728571643
Report verification at igi.org



August 22, 2025
IGI Report Number **LG728571643**
Description **LABORATORY GROWN DIAMOND**

Shape and Cutting Style **PRINCESS CUT**
Measurements **10.56 X 10.54 X 7.16 MM**

GRADING RESULTS

Carat Weight **7.01 CARATS**
Color Grade **F**
Clarity Grade **VVS 2**

August 22, 2025
IGI Report Number **LG728571643**
Description **LABORATORY GROWN DIAMOND**
Shape and Cutting Style **PRINCESS CUT**
Measurements **10.56 X 10.54 X 7.16 MM**

GRADING RESULTS

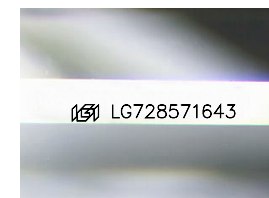
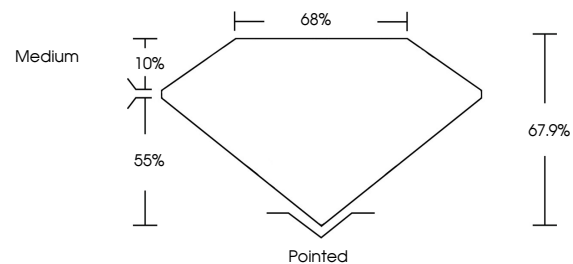
Carat Weight **7.01 CARATS**
Color Grade **F**
Clarity Grade **VVS 2**

ADDITIONAL GRADING INFORMATION

Polish **EXCELLENT**
Symmetry **EXCELLENT**
Fluorescence **NONE**
Inscription(s) **IGI LG728571643**

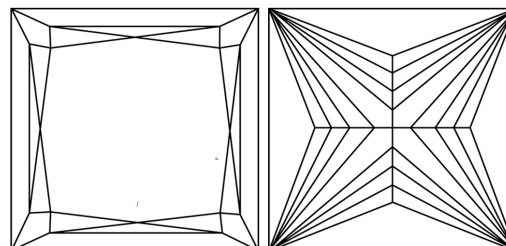
Comments: This Laboratory Grown Diamond was created by Chemical Vapor Deposition (CVD) growth process. Type IIa

PROPORTIONS



Sample Image Used

CLARITY CHARACTERISTICS



KEY TO SYMBOLS

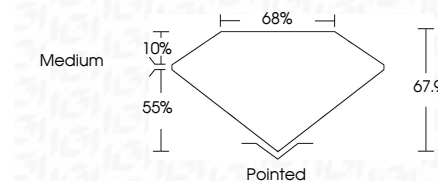
Red symbols indicate internal characteristics.
Green symbols indicate external characteristics.

COLOR

D E F G H I J Faint Very Light Light

CLARITY

| | | | | |
|---------------------|-----------------------------|------------------------|-------------------|------------------|
| IF | VS ¹⁻² | VS ¹⁻² | SI ¹⁻² | I ¹⁻³ |
| Internally Flawless | Very Very Slightly Included | Very Slightly Included | Slightly Included | Included |



ADDITIONAL GRADING INFORMATION

Polish **EXCELLENT**
Symmetry **EXCELLENT**
Fluorescence **NONE**
Inscription(s) **IGI LG728571643**
Comments: This Laboratory Grown Diamond was created by Chemical Vapor Deposition (CVD) growth process. Type IIa



August 22, 2025
IGI Report No LG728571643
PRINCESS CUT
7.01 CARATS
F
7.01 CARATS
Color Grade
F
Depth
VS 2
67.9%
65%
Medium
Pointed
EXCELLENT
EXCELLENT
NONE
IGI LG728571643
Comments: This Laboratory Grown Diamond was created by Chemical Vapor Deposition (CVD) growth process. Type IIa