



**LABORATORY GROWN DIAMOND REPORT**

August 20, 2025  
 IGI Report Number **LG728568812**  
 Description **LABORATORY GROWN DIAMOND**  
 Shape and Cutting Style **ROUND BRILLIANT**  
 Measurements **5.39 - 5.42 X 3.29 MM**

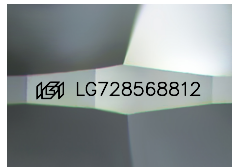
**GRADING RESULTS**

Carat Weight **0.59 CARAT**  
 Color Grade **D**  
 Clarity Grade **VVS 2**  
 Cut Grade **IDEAL**

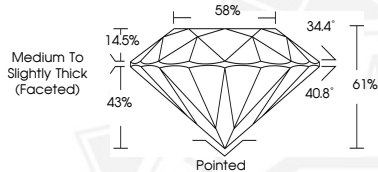
**ADDITIONAL GRADING INFORMATION**

Polish **EXCELLENT**  
 Symmetry **EXCELLENT**  
 Fluorescence **NONE**  
 Inscription(s) **IGI LG728568812**

Comments: HEARTS & ARROWS  
 This Laboratory Grown Diamond was created by Chemical Vapor  
 Deposition (CVD) growth process.  
 Type Ila



Sample Image Used



HEARTS & ARROWS



August 20, 2025  
 IGI Report Number **LG728568812**  
 ROUND BRILLIANT  
 LABORATORY GROWN DIAMOND  
 5.39 - 5.42 X 3.29 MM  
 Carat Weight **0.59 CARAT**  
 Color Grade **D**  
 Clarity Grade **VVS 2**  
 Cut Grade **IDEAL**  
 Polish **EXCELLENT**  
 Symmetry **EXCELLENT**  
 Fluorescence **NONE**  
 Inscription(s) **IGI LG728568812**

Comments: HEARTS & ARROWS This  
 Laboratory Grown Diamond was  
 created by Chemical Vapor  
 Deposition (CVD) growth process.  
 Type Ila



August 20, 2025  
 IGI Report Number **LG728568812**  
 ROUND BRILLIANT  
 LABORATORY GROWN DIAMOND  
 5.39 - 5.42 X 3.29 MM  
 Carat Weight **0.59 CARAT**  
 Color Grade **D**  
 Clarity Grade **VVS 2**  
 Cut Grade **IDEAL**  
 Polish **EXCELLENT**  
 Symmetry **EXCELLENT**  
 Fluorescence **NONE**  
 Inscription(s) **IGI LG728568812**

Comments: HEARTS & ARROWS This  
 Laboratory Grown Diamond was  
 created by Chemical Vapor  
 Deposition (CVD) growth process.  
 Type Ila

THIS DOCUMENT WAS PRODUCED WITH THE FOLLOWING SECURITY MEASURES: SPECIAL DOCUMENT PAPER, INK SCREENS, WATERMARK, BACKGROUND DESIGNS, HOLOGRAM AND OTHER SECURITY FEATURES NOT LISTED AND DO EXCEED DOCUMENT SECURITY INDUSTRY GUIDELINES.