

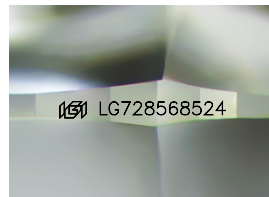
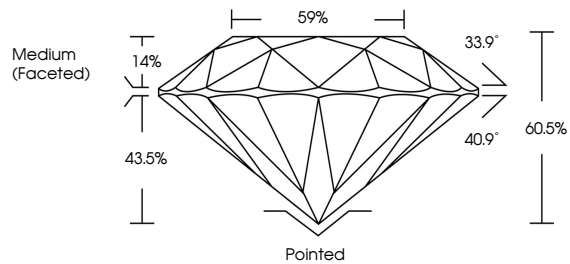


**INTERNATIONAL
GEMOLOGICAL
INSTITUTE**

ELECTRONIC COPY

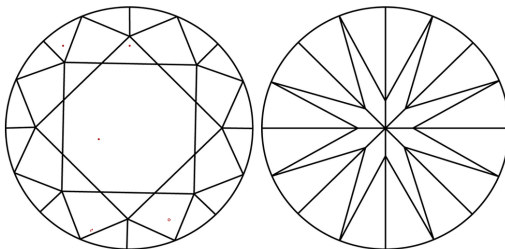
LG728568524
Report verification at igi.org

PROPORTIONS



Sample Image Used

CLARITY CHARACTERISTICS



KEY TO SYMBOLS

Red symbols indicate internal characteristics.
Green symbols indicate external characteristics.

COLOR

D E F G H I J Faint Very Light Light

CLARITY

IF WS¹⁻² VS¹⁻² SI¹⁻² |¹⁻³

Internally Flawless	Very Very Slightly Included	Very Slightly Included	Slightly Included	Included
------------------------	--------------------------------	---------------------------	----------------------	----------



August 20, 2025

IGI Report Number **LG728568524**

Description	LABORATORY GROWN DIAMOND
-------------	--------------------------

Shape and Cutting Style **ROUND BRILLIANT**

Measurements 8.76 - 8.81 X 5.32 MM

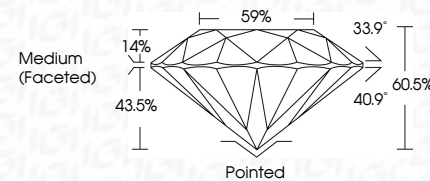
GRADING RESULTS

Carat Weight **2.52 CARATS**

Color Grade	E
-------------	---

Clarity Grade VS 1

Cut Grade **IDEAL**



ADDITIONAL GRADING INFORMATION

Polish **EXCELLENCE**Symmetry **EXCELLENCE**

Fluorescence NONI

Inscription(s) LG72856852

Comments: This Laboratory Grown Diamond was created by Chemical Vapor Deposition (CVD) growth process.
Type IIa



IG



© IGI 2020, International Gemological Institute

FD - 10 20



THIS DOCUMENT WAS PRODUCED WITH THE FOLLOWING SECURITY MEASURES: SPECIAL DOCUMENT PAPER, INK SCREENS, WATERMARK, BACKGROUND DESIGNS, HOLOGRAM AND OTHER SECURITY FEATURES NOT LISTED AND DO EXCEED DOCUMENT SECURITY INDUSTRY GUIDELINES

www.igi.org

August 20, 2025	252 CARATS		VS1 IDEAL 60.6% 59% Medium (Faceted)	Pointed	1891 LG728558924 1891 LG728558924
IGL Report No LG728558924	EXCELLENT			NONE	
ROUND BRILLIANT	EXCELLENT				
8.76 - 8.81 X 6.32 MM					
Color Weight					
Color Grade	VS1				
Clarity Grade	IDEAL				
Depth	60.6%				
Table	59%				
Girdle	Medium (Faceted)				
Culet					
Polish					
Symmetry					
Fluorescence					
Inscription(s)					

Comments:
 1. This is a Natural, Gemstone, Growth Diamond was
 created by Chemical Vapor Deposition
 (CVD) growth process.
 Type IIa