



# INTERNATIONAL GEMOLOGICAL INSTITUTE

## LABORATORY GROWN DIAMOND REPORT

August 23, 2025  
IGI Report Number **LG728565103**  
Description **LABORATORY GROWN DIAMOND**  
Shape and Cutting Style **HEART BRILLIANT**  
Measurements **5.52 X 6.46 X 3.71 MM**

### GRADING RESULTS

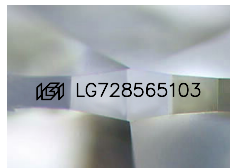
Carat Weight **0.80 CARAT**  
Color Grade **F**  
Clarity Grade **VVS 1**

### ADDITIONAL GRADING INFORMATION

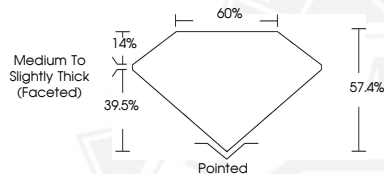
Polish **VERY GOOD**  
Symmetry **VERY GOOD**  
Fluorescence **NONE**  
Inscription(s) **IGI LG728565103**

Comments: This Laboratory Grown Diamond was created by Chemical Vapor Deposition (CVD) growth process. Type IIa

ELECTRONIC COPY



Sample Image Used



August 23, 2025  
IGI Report Number **LG728565103**  
**HEART BRILLIANT**  
**LABORATORY GROWN DIAMOND**  
**5.52 X 6.46 X 3.71 MM**  
Carat Weight **0.80 CARAT**  
Color Grade **F**  
Clarity Grade **VVS 1**  
Polish **VERY GOOD**  
Symmetry **VERY GOOD**  
Fluorescence **NONE**  
Inscription(s) **IGI LG728565103**  
Comments: This Laboratory Grown Diamond was created by Chemical Vapor Deposition (CVD) growth process. Type IIa



August 23, 2025  
IGI Report Number **LG728565103**  
**HEART BRILLIANT**  
**LABORATORY GROWN DIAMOND**  
**5.52 X 6.46 X 3.71 MM**  
Carat Weight **0.80 CARAT**  
Color Grade **F**  
Clarity Grade **VVS 1**  
Polish **VERY GOOD**  
Symmetry **VERY GOOD**  
Fluorescence **NONE**  
Inscription(s) **IGI LG728565103**  
Comments: This Laboratory Grown Diamond was created by Chemical Vapor Deposition (CVD) growth process. Type IIa



THIS DOCUMENT WAS PRODUCED WITH THE FOLLOWING SECURITY MEASURES: SPECIAL DOCUMENT PAPER, INK SCREENS, WATERMARK, BACKGROUND DESIGNS, HOLOGRAM AND OTHER SECURITY FEATURES NOT LISTED AND DO EXCEED DOCUMENT SECURITY INDUSTRY GUIDELINES.

For terms & conditions and to verify this report, please visit [www.igi.org](http://www.igi.org)