



ELECTRONIC COPY

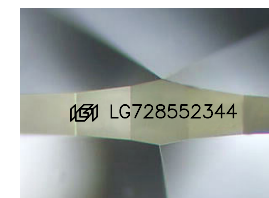
LG728552344
Report verification at igi.org



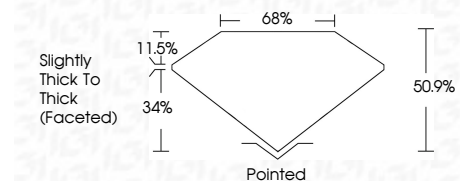
August 29, 2025
IGI Report Number **LG728552344**
Description **LABORATORY GROWN DIAMOND**
Shape and Cutting Style **HEART MODIFIED BRILLIANT**
Measurements **8.98 X 10.70 X 5.45 MM**

GRADING RESULTS

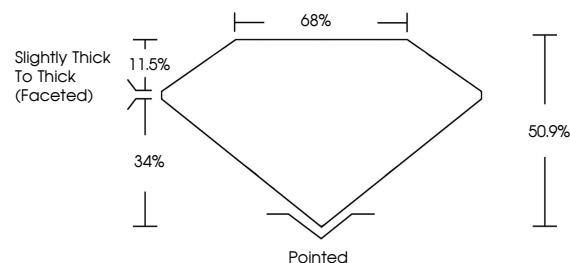
Carat Weight **4.05 CARATS**
Color Grade **FANCY YELLOW**
Clarity Grade **VS 2**



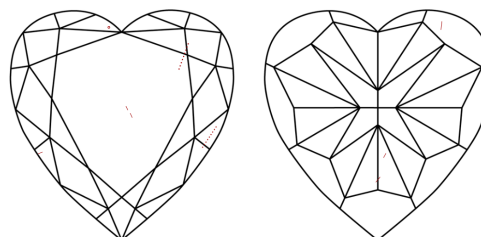
Sample Image Used



PROPORTIONS



CLARITY CHARACTERISTICS



KEY TO SYMBOLS

Red symbols indicate internal characteristics.
Green symbols indicate external characteristics.

COLOR

D E F G H I J Faint Very Light Light

CLARITY

IF WS¹⁻² VS¹⁻² SI¹⁻² I¹⁻³

Internally Flawless Very Very Slightly Included Very Slightly Included Slightly Included Included

ADDITIONAL GRADING INFORMATION

Polish **EXCELLENT**
Symmetry **EXCELLENT**
Fluorescence **NONE**
Inscription(s) **IGI LG728552344**
Comments: This Laboratory Grown Diamond was created by Chemical Vapor Deposition (CVD) growth process.



IGI



August 29, 2025
IGI Report No LG728552344
HEART MODIFIED BRILLIANT
8.98 X 10.70 X 5.45 MM
4.05 CARATS
FANCY YELLOW
VS 2
60.9%
65%
Slightly Thick To Thick (Faceted)
Pointed
EXCELLENT
EXCELLENT
NONE
IGI LG728552344
Comments: This Laboratory Grown Diamond was created by Chemical Vapor Deposition (CVD) growth process.