

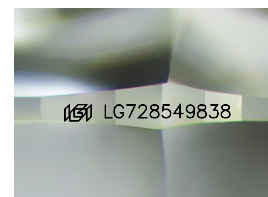
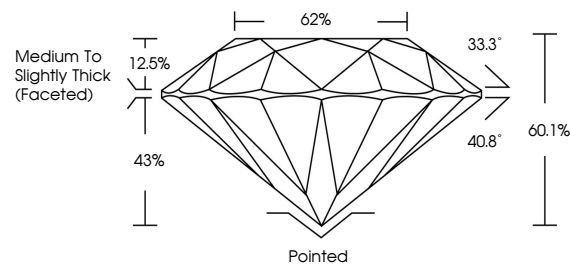


**ELECTRONIC COPY**

## LABORATORY GROWN DIAMOND REPORT

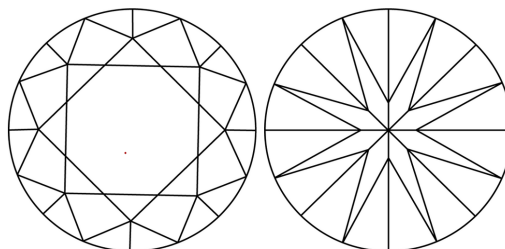
LG728549838  
Report verification at [igi.org](https://igi.org)

## PROPORTIONS



Sample Image Used

## CLARITY CHARACTERISTICS



### KEY TO SYMBOLS

Red symbols indicate internal characteristics.  
Green symbols indicate external characteristics.

## COLOR

D E F G H I J Faint Very Light Light

## CLARITY

IF WS<sup>1-2</sup> VS<sup>1-2</sup> S<sup>1-2</sup> |<sup>1-3</sup>

Internally Flawless	Very Very Slightly Included	Very Slightly Included	Slightly Included	Included
------------------------	--------------------------------	---------------------------	----------------------	----------

## LABORATORY GROWN DIAMOND REPORT



August 14, 2025

IGI Report Number **LG728549838**

Description	LABORATORY GROWN DIAMOND
-------------	--------------------------

Shape and Cutting Style **ROUND BRILLIANT**

Measurements	11.68 - 11.74 X 7.03 MM
--------------	-------------------------

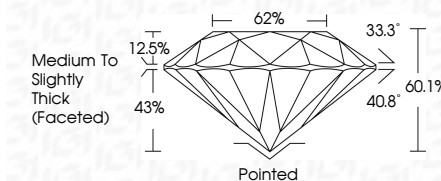
## GRADING RESULTS

Carat Weight **6.01 CARATS**

Color Grade E

Clarity Grade **VVS 2**

Cut Grade **EXCELLENT**



### ADDITIONAL GRADING INFORMATION

Polish **EXCELLENT**Symmetry **EXCELLENT**Fluorescence **NONE**Inscription(s)  LG728549838

Comments: This Laboratory Grown Diamond was created by Chemical Vapor Deposition (CVD) growth process.  
Type IIa



© IGI 2020, International Gemological Institute

FD - 10 20

**www.igi.org**



THIS DOCUMENT WAS PRODUCED WITH THE FOLLOWING SECURITY MEASURES: SPECIAL DOCUMENT PAPER, INK SCREENS, WATERMARK BACKGROUND DESIGNS, HOLOGRAM AND OTHER SECURITY FEATURES NOT LISTED AND DO EXCEED DOCUMENT SECURITY INDUSTRY GUIDELINES

August 14, 2025  
GI Report No LG728549838  
ROUND BRILLIANT

11.58 - 11.74 X 7.03 MM	4.01 CARATS
Carat Weight	VVS 2
Color Grade	EXCELLENT
Clarity Grade	60% Medium to slightly Thick Faceted
Cut Grade	Partnered
Depth	EXCELLENT
Table	EXCELLENT
Girdle	NONE
Culet	
Polish	
Symmetry	
Fluorescence	

**Comments:**  
This Laboratory Grown Diamond was created by Chemical Vapor Deposition (CVD) growth process.