



ELECTRONIC COPY

LG728549833 Report verification at igi.org



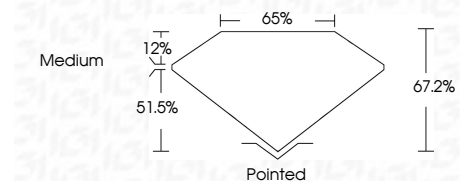
August 18, 2025 IGI Report Number LG728549833 Description LABORATORY GROWN DIAMOND

Shape and Cutting Style CUT CORNERED RECTANGULAR MODIFIED BRILLIANT

Measurements 10.48 X 7.17 X 4.82 MM

GRADING RESULTS

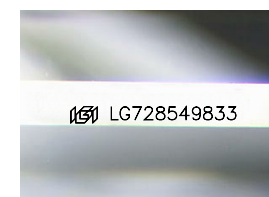
Carat Weight 3.08 CARATS Color Grade E Clarity Grade VVS 2



ADDITIONAL GRADING INFORMATION

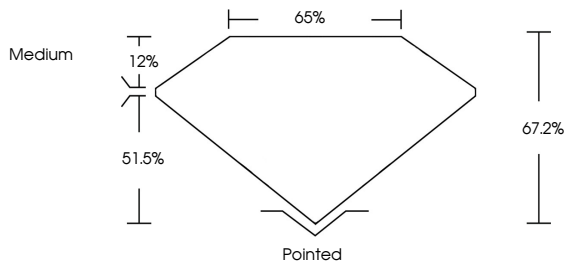
Polish EXCELLENT Symmetry EXCELLENT Fluorescence NONE Inscription(s) IGI LG728549833

Comments: This Laboratory Grown Diamond was created by Chemical Vapor Deposition (CVD) growth process. Type IIa

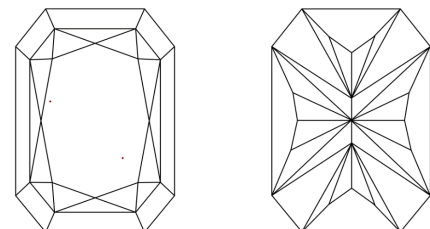


Sample Image Used

PROPORTIONS



CLARITY CHARACTERISTICS



KEY TO SYMBOLS

Red symbols indicate internal characteristics. Green symbols indicate external characteristics.

COLOR

D E F G H I J Faint Very Light Light

CLARITY

IF WS 1-2 VS 1-2 SI 1-2 I 1-3 Internally Flawless Very Very Slightly Included Very Slightly Included Slightly Included Included



August 18, 2025 IGI Report No LG728549833 CUT CORNERED RECT. MODIFIED BRILLIANT 10.48 X 7.17 X 4.82 MM 3.08 CARATS E VVS 2 67.2% 65% Medium Pointed EXCELLENT EXCELLENT NONE IGI LG728549833 Comments: This Laboratory Grown Diamond was created by Chemical Vapor Deposition (CVD) growth process. Type IIa