



ELECTRONIC COPY

LG728547610
Report verification at igi.org



August 15, 2025
IGI Report Number **LG728547610**

Description **LABORATORY GROWN DIAMOND**

Shape and Cutting Style **PRINCESS CUT**

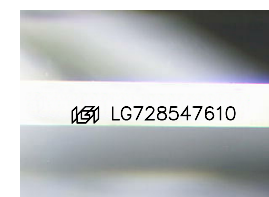
Measurements **9.43 X 9.30 X 6.56 MM**

GRADING RESULTS

Carat Weight **5.10 CARATS**

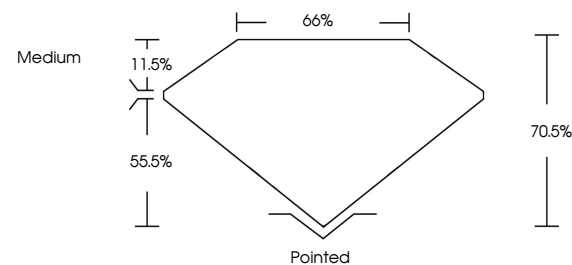
Color Grade **E**

Clarity Grade **VVS 2**

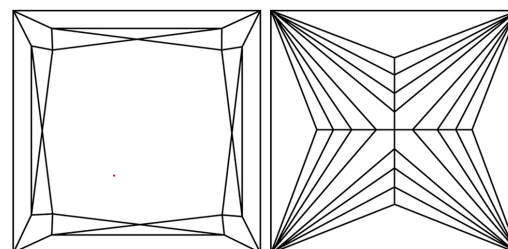


Sample Image Used

PROPORTIONS



CLARITY CHARACTERISTICS



KEY TO SYMBOLS

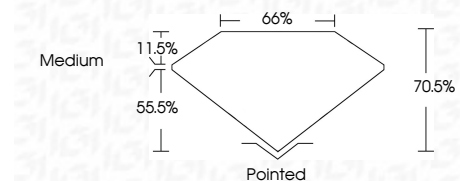
Red symbols indicate internal characteristics.
Green symbols indicate external characteristics.

COLOR

D E F G H I J Faint Very Light Light

CLARITY

IF	VS ¹⁻²	VS ¹⁻²	SI ¹⁻²	I ¹⁻³
Internally Flawless	Very Very Slightly Included	Very Slightly Included	Slightly Included	Included



ADDITIONAL GRADING INFORMATION

Polish **EXCELLENT**

Symmetry **EXCELLENT**

Fluorescence **NONE**

Inscription(s) **IGI LG728547610**

Comments: This Laboratory Grown Diamond was created by Chemical Vapor Deposition (CVD) growth process.
Type IIa



IGI



August 15, 2025
IGI Report No LG728547610
PRINCESS CUT
9.43 X 9.30 X 6.56 MM
5.10 CARATS
E
VVS 2
70.5%
65%
Medium
Pointed
EXCELLENT
EXCELLENT
NONE
IGI LG728547610
Comments: This Laboratory Grown Diamond was created by Chemical Vapor Deposition (CVD) growth process.
Type IIa