



**ELECTRONIC COPY**

## LABORATORY GROWN DIAMOND REPORT

August 18, 2025	
IGI Report Number	LG728537990
Description	LABORATORY GROWN DIAMOND
Shape and Cutting Style	PRINCESS CUT
Measurements	9.47 X 9.38 X 6.60 MM

## GRADING RESULTS

Carat Weight	5.06 CARATS
Color Grade	E
Clarity Grade	VVS 2

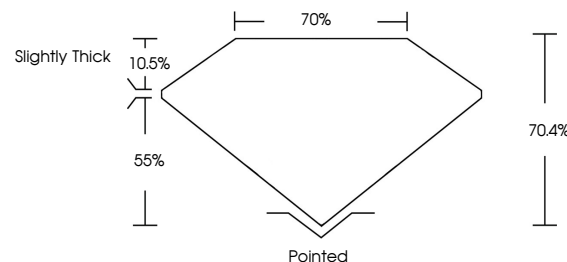
### ADDITIONAL GRADING INFORMATION

Polish	EXCELLENT
Symmetry	EXCELLENT
Fluorescence	NONE
Inscription(s)	151 LG728537990

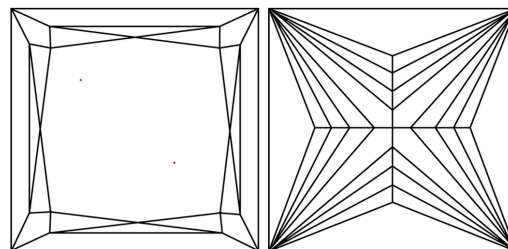
Comments: This Laboratory Grown Diamond was created by Chemical Vapor Deposition (CVD) growth process.  
Type IIa

LG728537990  
Report verification at [lgi.org](https://lgi.org)

## PROPORTIONS

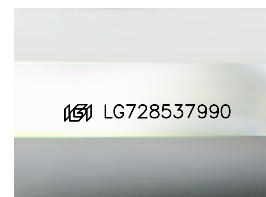


## CLARITY CHARACTERISTICS



### KEY TO SYMBOLS

Red symbols indicate internal characteristics.  
Green symbols indicate external characteristics.



Sample Image Used

## COLOR

D E F G H I J Faint Very Light Light

## CLARITY

IF                      VWS<sup>1-2</sup>                      VS<sup>1-2</sup>                      SI<sup>1-2</sup>                      I<sup>1-3</sup>

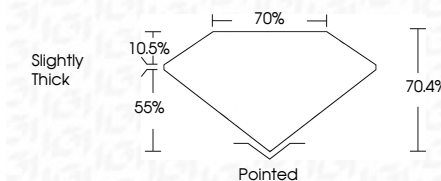
Internally Flawless	Very Very Slightly Included	Very Slightly Included	Slightly Included	Included
------------------------	--------------------------------	---------------------------	----------------------	----------



August 18, 2025	
IGI Report Number	LG728537990
Description	LABORATORY GROWN DIAMOND
Shape and Cutting Style	PRINCESS CUT
Measurements	9.47 X 9.38 X 6.60 MM

## GRADING RESULTS

Carat Weight	5.06 CARATS
Color Grade	E
Clarity Grade	VVS 2



### ADDITIONAL GRADING INFORMATION

Polish	EXCELLENT
Symmetry	EXCELLENT
Fluorescence	NONE
Inscription(s)	 LG728537990

Comments: This Laboratory Grown Diamond was created by Chemical Vapor Deposition (CVD) growth process.  
Type IIa



**www.igi.org**

© IGI 2020, International Gemological Institute

FD - 10 20



THIS DOCUMENT WAS PRODUCED WITH THE FOLLOWING SECURITY MEASURES: SPECIAL DOCUMENT PAPER, INK SCREENS, WATERMARK, BACKGROUND DESIGNS, HOLOGRAM AND OTHER SECURITY FEATURES NOT LISTED AND DO EXCEED DOCUMENT SECURITY INDUSTRY GUIDELINE

August 18, 2025  
 LGI Report No LG728537990  
 PRINCESS CLIT

Carat Weight	5.06 CARATS
Color Grade	VVS 2
Clarity Grade	70-6%
Depth	70%
Table	Slightly Thick
Girdle	
Culet	Pointed
Polish	EXCELLENT
Symmetry	EXCELLENT
Fluorescence	NONE

**Comments:**  
This Laboratory Grown Diamond was created by Chemical Vapor Deposition (CVD) growth process.