



ELECTRONIC COPY

LABORATORY GROWN DIAMOND REPORT

September 3, 2025	
IGI Report Number	LG728531478
Description	LABORATORY GROWN DIAMOND
Shape and Cutting Style	ROUND BRILLIANT
Measurements	8.72 - 8.75 X 5.25 MM

GRADING RESULTS

Carat Weight	2.43 CARATS
Color Grade	D
Clarity Grade	VVS 2
Cut Grade	EXCELLENT

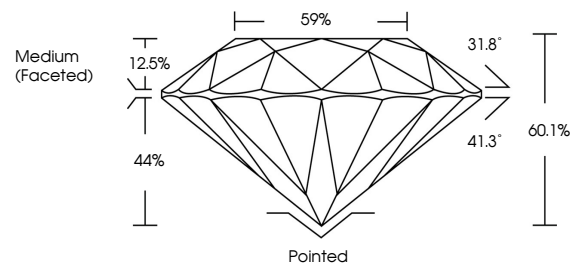
ADDITIONAL GRADING INFORMATION

Polish	EXCELLENT
Symmetry	EXCELLENT
Fluorescence	NONE
Inscription(s)	151 LG728531478

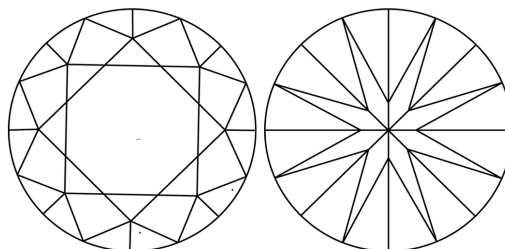
Comments: This Laboratory Grown Diamond was created by Chemical Vapor Deposition (CVD) growth process.
Type IIa

LG728531478
Report verification at lgi.org

PROPORTIONS

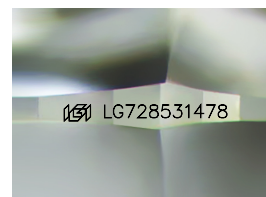


CLARITY CHARACTERISTICS



KEY TO SYMBOLS

Red symbols indicate internal characteristics.
Green symbols indicate external characteristics.



Sample Image Used

COLOR

D E F G H I J Faint Very Light Light

CLARITY

IF WS¹⁻² VS¹⁻² SI¹⁻² |¹⁻³

Internally Flawless	Very Very Slightly Included	Very Slightly Included	Slightly Included	Included
------------------------	--------------------------------	---------------------------	----------------------	----------

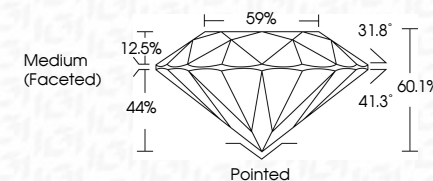
LABORATORY GROWN DIAMOND REPORT



September 3, 2025	
IGI Report Number	LG728531478
Description	LABORATORY GROWN DIAMOND
Shape and Cutting Style	ROUND BRILLIANT
Measurements	8.72 - 8.75 X 5.25 MM

GRADING RESULTS

Carat Weight	2.43 CARATS
Color Grade	D
Clarity Grade	VVS 2
Cut Grade	EXCELLENT



ADDITIONAL GRADING INFORMATION

Polish	EXCELLENT
Symmetry	EXCELLENT
Fluorescence	NONE
Inscription(s)	 LG728531478
<p>Comments: This Laboratory Grown Diamond was created by Chemical Vapor Deposition (CVD) growth process.</p> <p>Type IIa</p>	



© IGI 2020, International Gemological Institute

FD - 10 20

www.igi.org



THIS DOCUMENT WAS PRODUCED WITH THE FOLLOWING SECURITY MEASURES: SPECIAL DOCUMENT PAPER, INK SCREENS, WATERMARK, BACKGROUND DESIGNS, HOLOGRAM AND OTHER SECURITY FEATURES NOT LISTED AND DO EXCEED DOCUMENT SECURITY INDUSTRY GUIDELINE

September 3, 2025
ICI Report No LG728531478
ROUND BRILLIANT

8.72 - 8.75 X 5.25 MM	Carat Weight	2.43 CARATS
	Color Grade	D
	Clarity Grade	VVS 2
	Cut Grade	EXCELLENT
	Depth	60.1%
	Table	59%
	Girdle	Medium (Faceted)
	Culet	Pointed
	Polish	EXCELLENT
	Symmetry	EXCELLENT
	Fluorescence	NONE

Comments:
This Laboratory Grown Diamond was created by Chemical Vapor Deposition (CVD) growth process.