



ELECTRONIC COPY

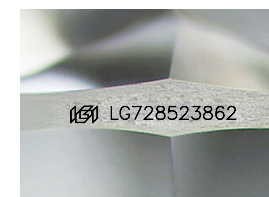
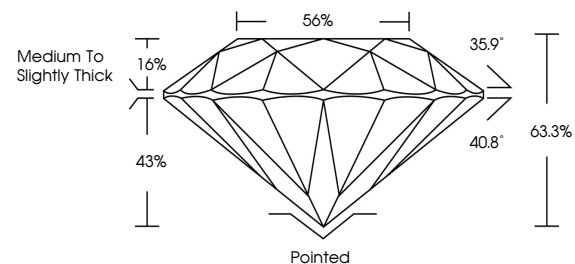
LG728523862
Report verification at igi.org



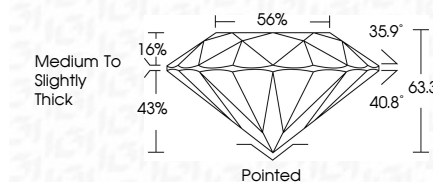
October 8, 2025
IGI Report Number **LG728523862**
Description **LABORATORY GROWN DIAMOND**
Shape and Cutting Style **ROUND BRILLIANT**
Measurements **6.74 - 6.80 X 4.29 MM**
GRADING RESULTS
Carat Weight **1.23 CARAT**
Color Grade **E**
Clarity Grade **VS 2**
Cut Grade **EXCELLENT**

October 8, 2025
IGI Report Number **LG728523862**
Description **LABORATORY GROWN DIAMOND**
Shape and Cutting Style **ROUND BRILLIANT**
Measurements **6.74 - 6.80 X 4.29 MM**
GRADING RESULTS
Carat Weight **1.23 CARAT**
Color Grade **E**
Clarity Grade **VS 2**
Cut Grade **EXCELLENT**

PROPORTIONS



Sample Image Used



ADDITIONAL GRADING INFORMATION
Polish **EXCELLENT**
Symmetry **EXCELLENT**
Fluorescence **NONE**
Inscription(s) **IGI LG728523862**

COLOR

D E F G H I J Faint Very Light Light

CLARITY

FL	IF	VS ¹⁻²	VS ¹⁻²	SI ¹⁻²	I ¹⁻³
Flawless	Internally Flawless	Very Very Slightly Included	Very Slightly Included	Slightly Included	Included

ADDITIONAL GRADING INFORMATION

Polish **EXCELLENT**
Symmetry **EXCELLENT**
Fluorescence **NONE**
Inscription(s) **IGI LG728523862**



IGI

October 8, 2025
IGI Report No **LG728523862**
ROUND BRILLIANT
6.74 - 6.80 X 4.29 MM
Carat Weight **1.23 CARAT**
Color Grade **E**
Clarity Grade **VS 2**
Depth **EXCELLENT**
Table **63.3%**
Girdle **56%**
Medium To Slightly Thick
Culet **Pointed**
Polish **EXCELLENT**
Symmetry **EXCELLENT**
Fluorescence **NONE**
Inscriptions(s) **IGI LG728523862**